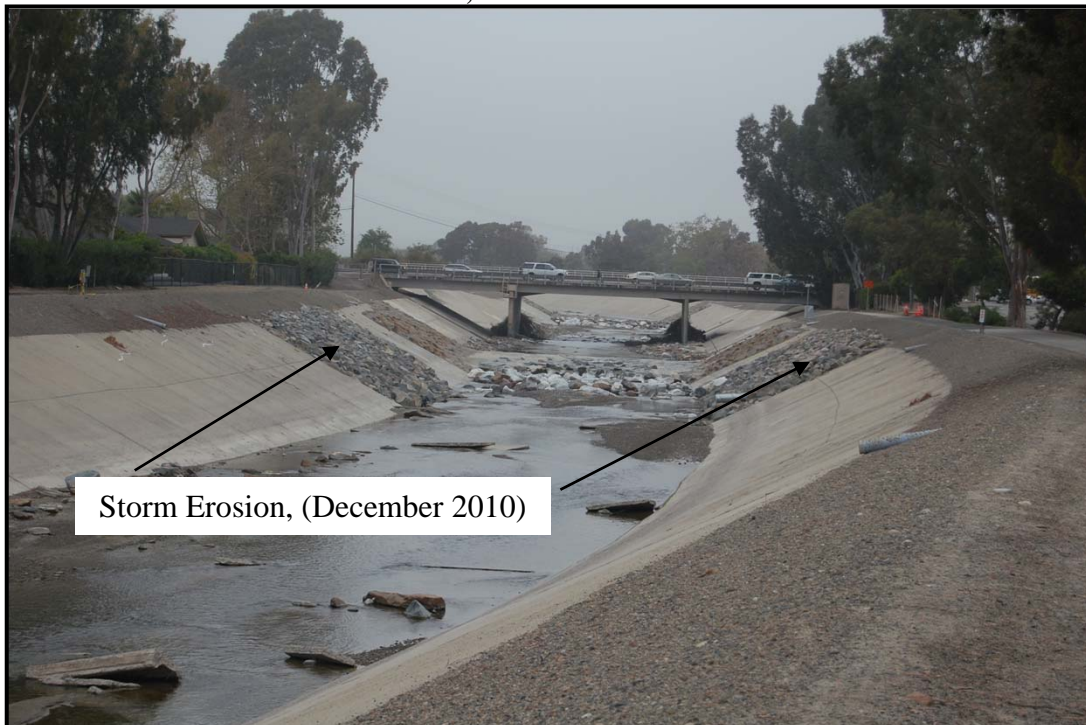


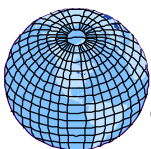
SITE PHOTOGRAPHS



⑨ Open-space Park Site-Former Landfill Location-South of Del Obsipo Street, West of Los Rios Street, East of Paseo Adelanto



⑩ Partially Improved Trabuco Creek with Recent Storm Overflow and Erosion



GLOBAL GEO-ENGINEERING, INC.

GEOLOGIC AND SOILS ENGINEERING IRVINE, CALIFORNIA

San Juan Capistrano Historic Town Center
San Juan Capistrano, California

Date: March 2011

Figure No:

Project No.: 4627-09

A-7