

S'LY R/W ORTEGA Hwy.

R/W

40.38

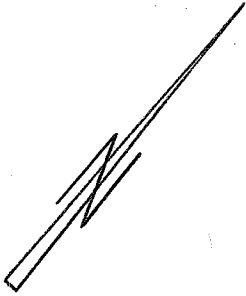
30.89

R/W

44.21

41.11

R/W RANCHO VIEJO



45.03

38.06

41.28

28.57

Sta. 3+10<sup>55</sup> B.C.

• = Lead Plug & Tack  
in Top of Curb

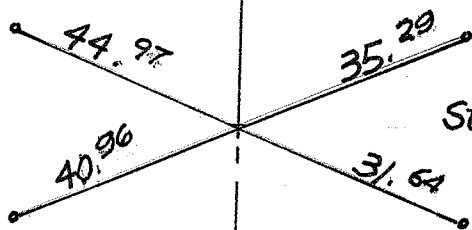
JOB NO	REFERENCE	
	POINTS TO & CONTROL	
	ORTEGA PROPERTIES	
	ASSESSMENT DISTRICT	
FIELD WORK BY	NAME	DATE
DRAWN BY		
CHECKED BY		

South Coast Engineering Service

EUGENE H. AYER  
REGISTERED CIVIL ENGINEER

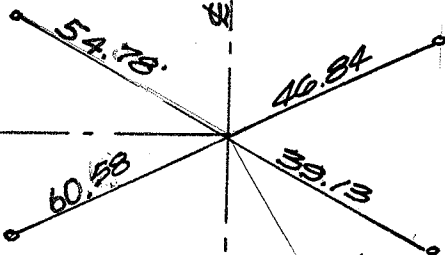
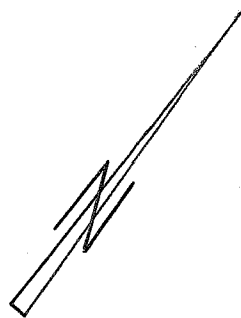
420 N. El Camino Real

San Clemente, California (714) 492-3241  
92672



Sta. 5+64.26 E.C.

R/W RANCHO VIEJO



PASEO ESPADA

INT. Sta. 6+55.61

° = Lead Plug & Tack  
in Top of Curb

JOB NO. REFERENCE

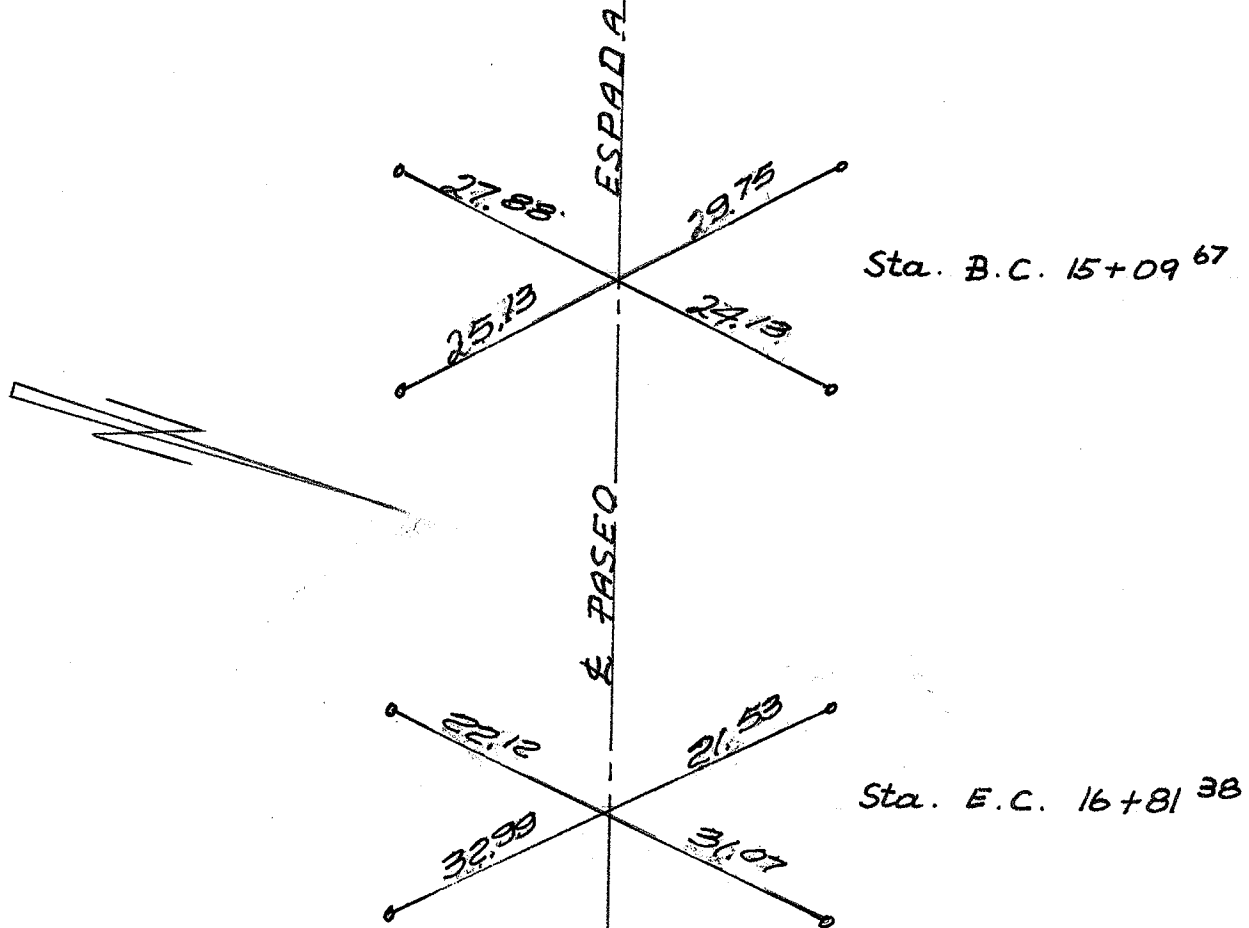
POINTS TO CONTROL  
ORTEGA PROPERTIES  
ASSESSMENT DISTRICT

FIELD WORK BY	NAME	DATE
DRAWN BY		
CHECKED BY		

South Coast Engineering Service

EUGENE H. AYER  
REGISTERED CIVIL ENGINEER

420 N. El Camino Real  
SAN CLEMENTE, CALIFORNIA 92672  
(714) 492-3241



o = Lead Plug & Tack  
in Top of Curb

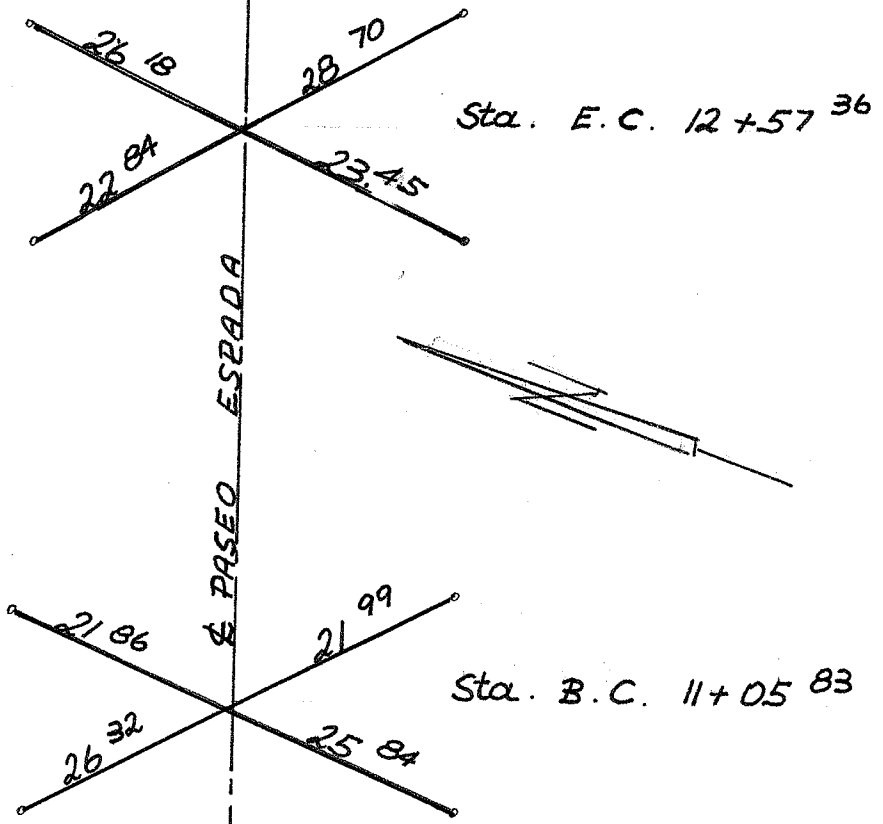
JOB NO	REFERENCE	
	POINTS TO & CONTROL	
	ORTEGA PROPERTIES	
	ASSESSMENT DISTRICT	
FIELD WORK BY	NAME	DATE
DRAWN BY		
CHECKED BY		

South Coast Engineering Service

EUGENE H. AYER  
REGISTERED CIVIL ENGINEER

420 N. El Camino Real

~~2720 El Camino Real~~ / (714) 492-3241  
SAN CLEMENTE, CALIFORNIA 92672



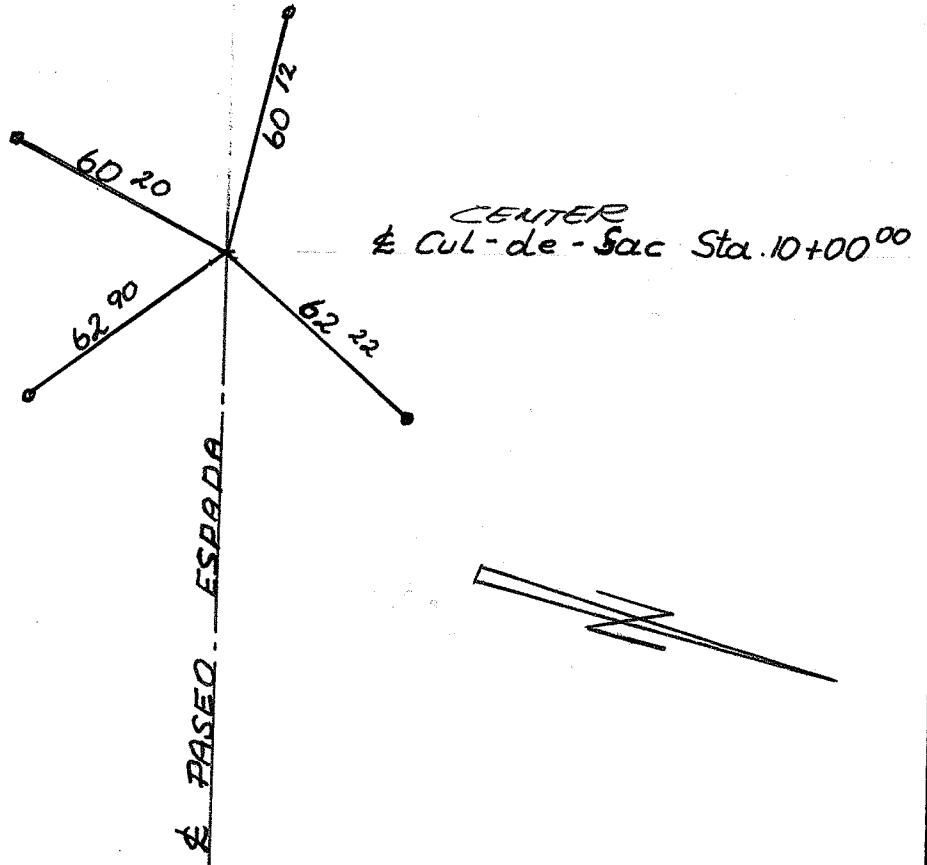
° = LEAD PLUG & TACK  
IN TOP OF CURB

JOB NO	REFERENCE	
	POINTS TO & CONTROL	
	ORTEGA PROPERTIES	
	ASSESSMENT DISTRICT	
	NAME	DATE
FIELD WORK BY		
DRAWN BY		
CHECKED BY		

**South Coast Engineering Service**

EUGENE H. AYER  
REGISTERED CIVIL ENGINEER

420 N. El Camino Real  
~~220 S. GARDEN STREET~~ / (714) 492-3241  
 SAN CLEMENTE, CALIFORNIA 92672



° = Lead Plug & Tack  
in Top of Curb

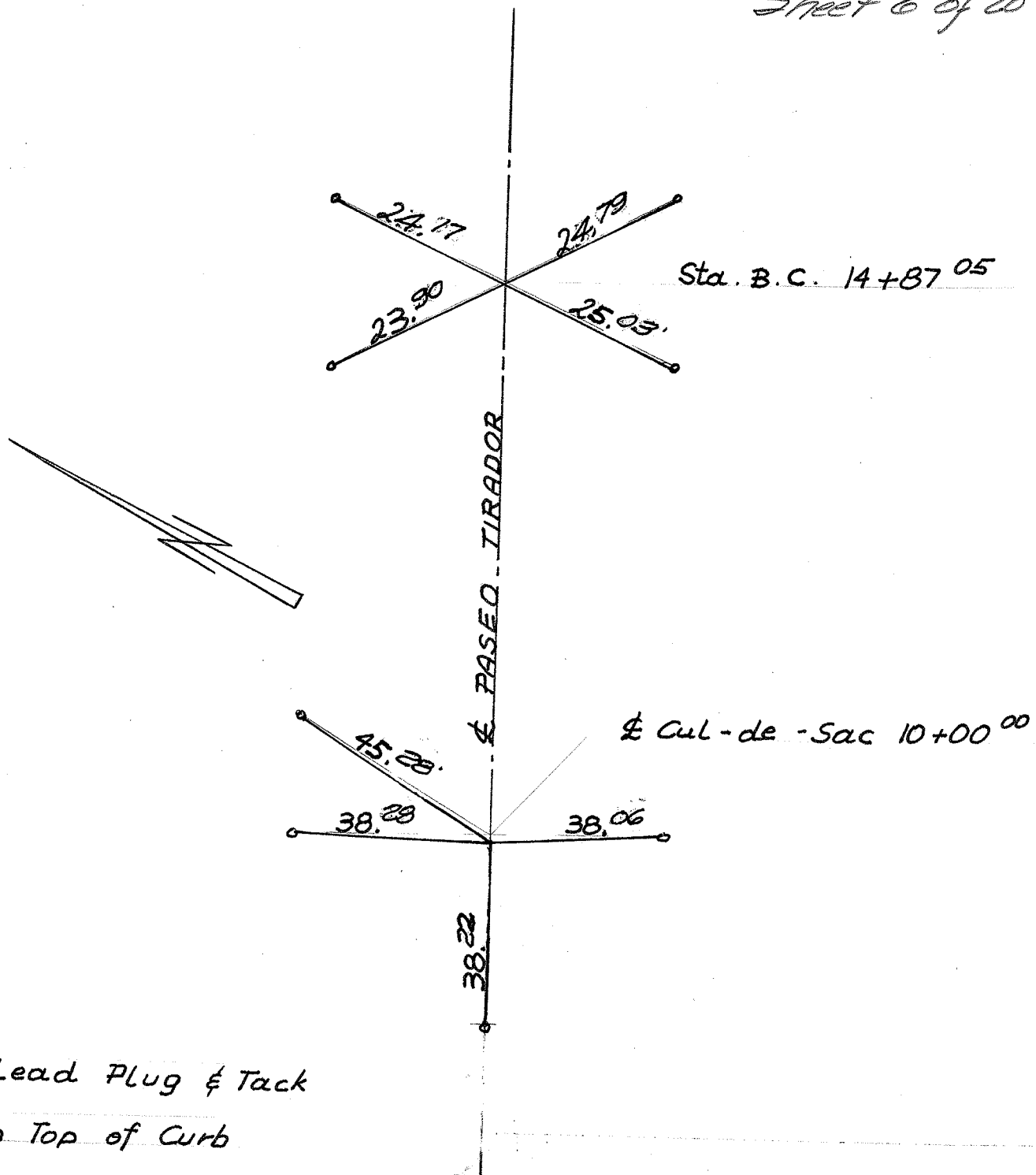
JOB NO	REFERENCE	
	POINTS TO & CONTROL	
	ORTEGA PROPERTIES	
	ASSESSMENT DISTRICT	
FIELD WORK BY	NAME	DATE
DRAWN BY		
CHECKED BY		

**South Coast Engineering Service**

**EUGENE H. AYER**  
REGISTERED CIVIL ENGINEER

420 N. El Camino Real

~~714~~ (714) 492-3241  
SAN CLEMENTE, CALIFORNIA 92672



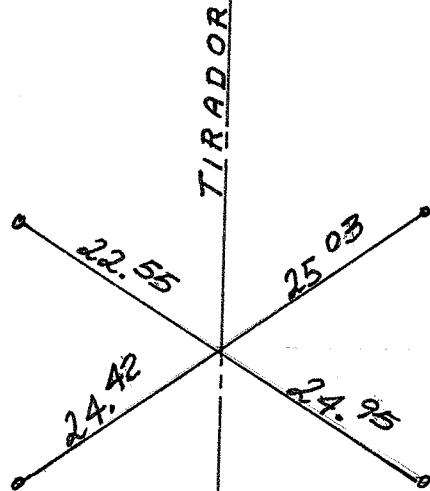
• = Lead Plug & Tack  
in Top of Curb

JOB NO		REFERENCE
POINTS TO & - CONTROL		
ORTEGA - PROPERTIES		
ASSESSMENT DISTRICT		
FIELD WORK BY	NAME	DATE
DRAWN BY		
CHECKED BY		

South Coast Engineering Service

EUGENE H. AYER  
REGISTERED CIVIL ENGINEER

420 N. El Camino Real  
SAN CLEMENTE, CALIFORNIA 92672



Sta. E.C. 17+20<sup>92</sup>

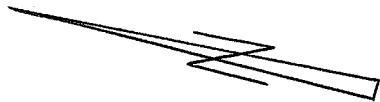
° = Lead Plug & Tack  
in Top of Curb

JOB NO	REFERENCE	
	POINTS TO & CONTROL	
	ORTEGA PROPERTIES	
	ASSESSMENT DISTRICT	
FIELD WORK BY	NAME	DATE
DRAWN BY		
CHECKED BY		

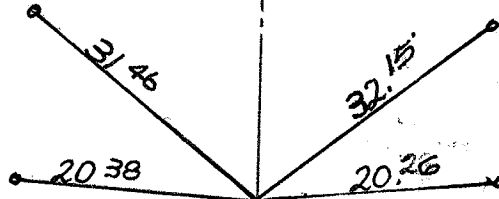
South Coast Engineering Service

EUGENE H. AYER  
REGISTERED CIVIL ENGINEER

420 N. El Camino Real  
~~2700 Camino Coronado~~ (714) 492-3241  
SAN CLEMENTE, CALIFORNIA 92672



CALLE ARROYO



END CONST. Sta. 4+94.59

° = Lead Plug & Tack  
in Top of Curb

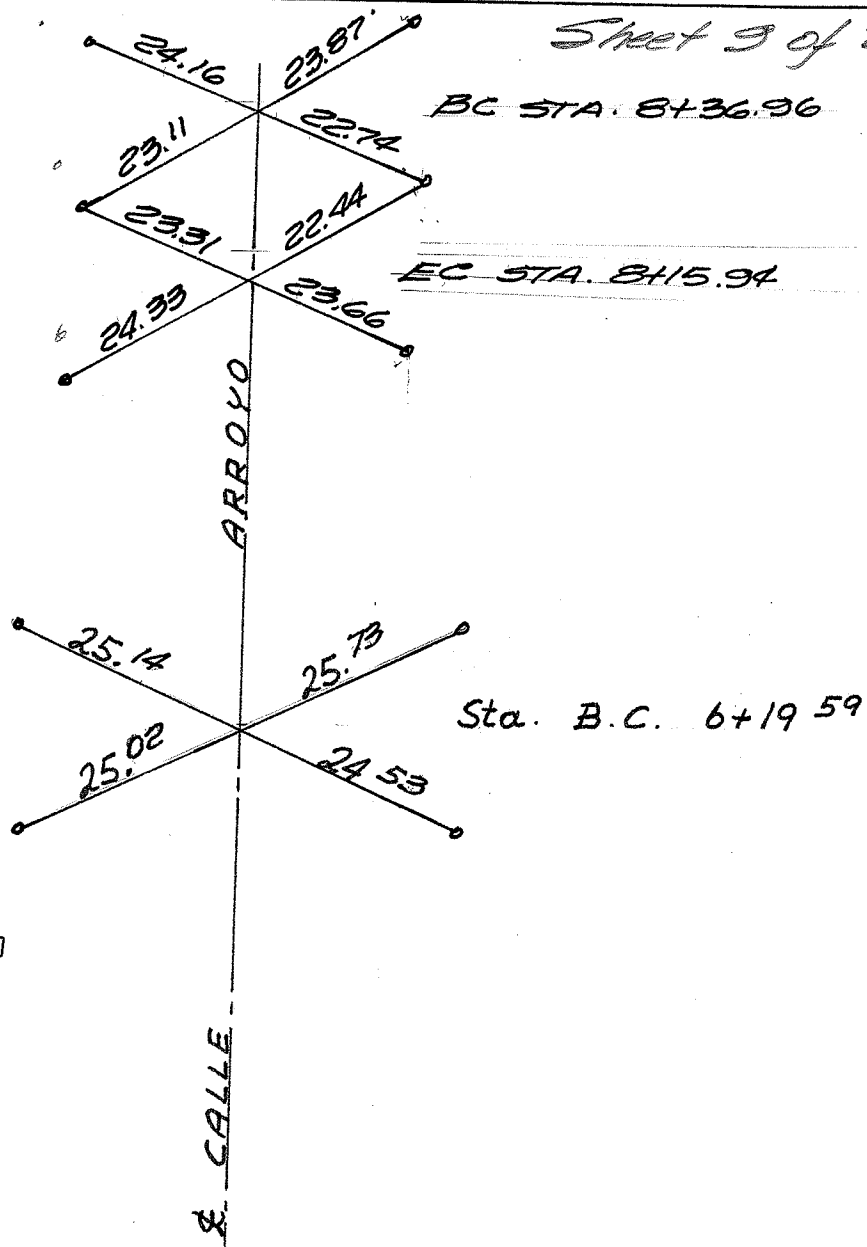
JOB NO	REFERENCE	
	POINTS TO & CONTROL	
	ORTEGA PROPERTIES	
	ASSESSMENT DISTRICT	
FIELD WORK BY	NAME	DATE
DRAWN BY		
CHECKED BY		

South Coast Engineering Service

EUGENE H. AYER  
REGISTERED CIVIL ENGINEER

420 N. El Camino Real  
~~2740 Camino del Sur~~ (714) 492-3241  
 SAN CLEMENTE, CALIFORNIA 92672





° = Lead Plug & Tack  
in Top of Curb

JOB NO		REFERENCE	
POINTS TO & CONTROL		ORTEGA PROPERTIES	
ASSESSMENT DISTRICT			
FIELD WORK BY	NAME	DATE	
DRAWN BY			
CHECKED BY			

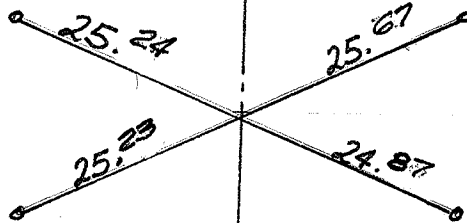
**South Coast Engineering Service**

EUGENE H. AYER  
REGISTERED CIVIL ENGINEER

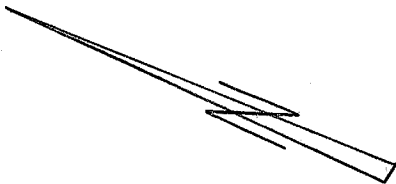
420 N. El Camino Real  
SAN CLEMENTE, CALIFORNIA 92672  
TEL: (714) 492-3241

ARROYO

EL CALLE



Sta. E.C. 9+46 04



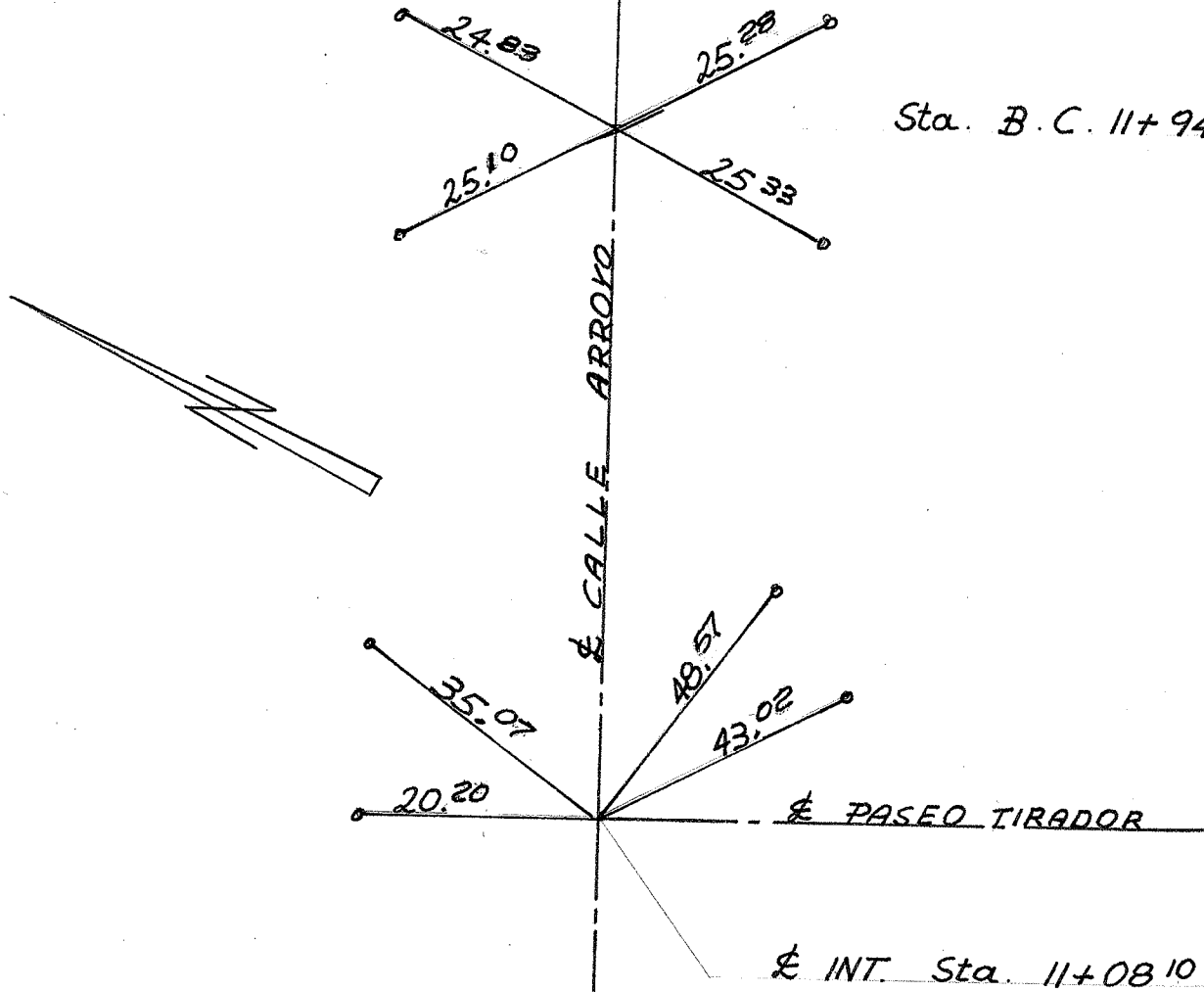
° = Lead Plug & Tack  
in Top of Curb

JOB NO		REFERENCE	
POINTS TO & CONTROL			
ORTEGA PROPERTIES			
ASSESSMENT DISTRICT			
FIELD WORK BY		NAME	DATE
DRAWN BY			
CHECKED BY			

South Coast Engineering Service

EUGENE H. AYER  
REGISTERED CIVIL ENGINEER

420 N. El Camino Real  
~~2700 CAMINO REAL~~ (714) 492-3241  
SAN CLEMENTE, CALIFORNIA 92672



Sta. B.C. 11+94 85

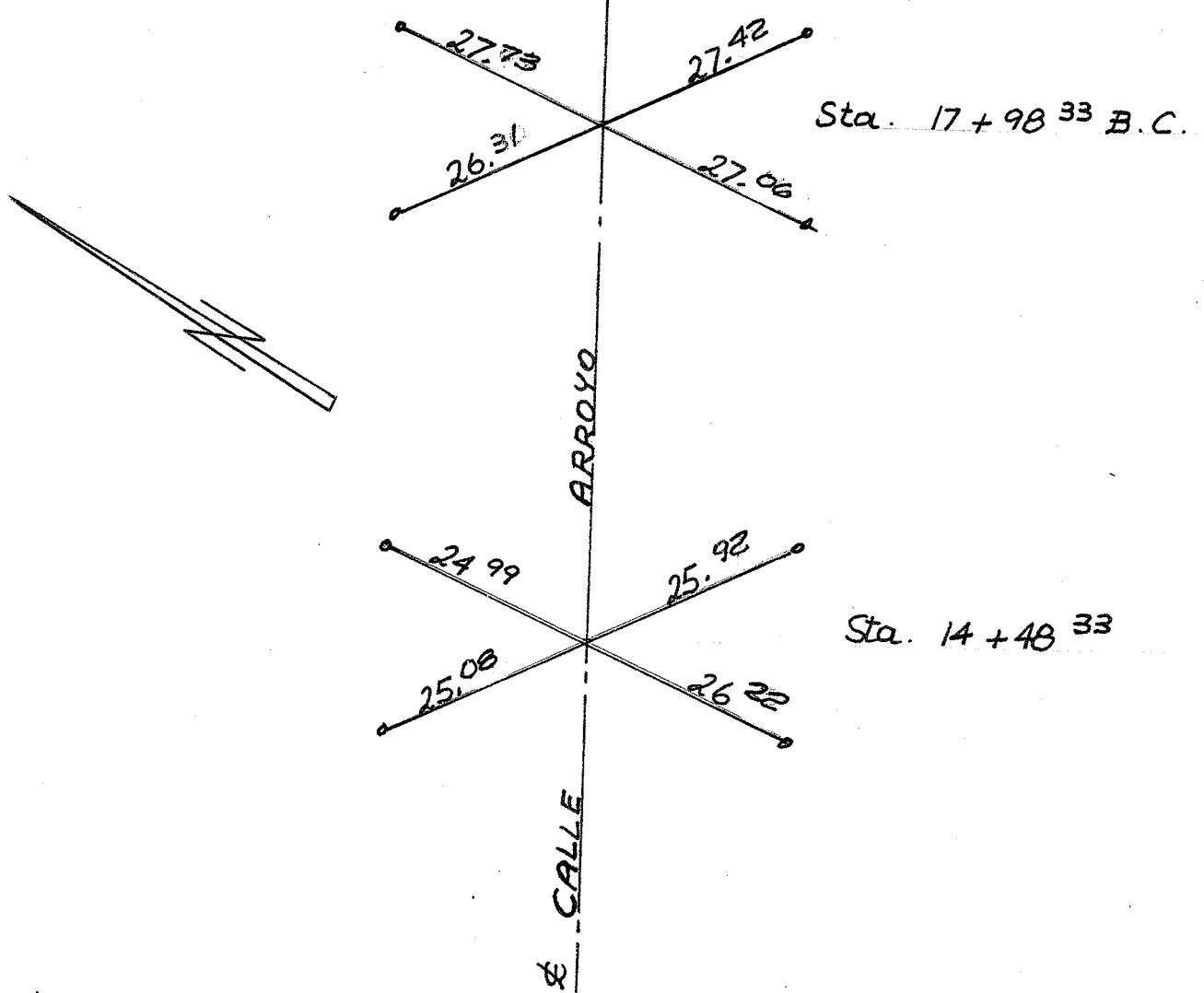
° = Lead Plug & Tack  
in Top of Curb

JOB NO	REFERENCE	
	POINTS TO & CONTROL	
	ORTEGA PROPERTIES	
	ASSESSMENT DISTRICT	
FIELD WORK BY	NAME	DATE
DRAWN BY		
CHECKED BY		

**South Coast Engineering Service**

EUGENE H. AYER  
REGISTERED CIVIL ENGINEER

420 N. El Camino Real  
SAN CLEMENTE, CALIFORNIA 92672  
Phone: (714) 492-3241



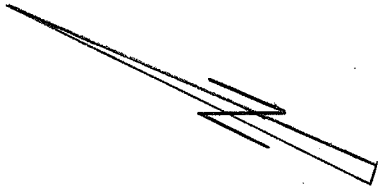
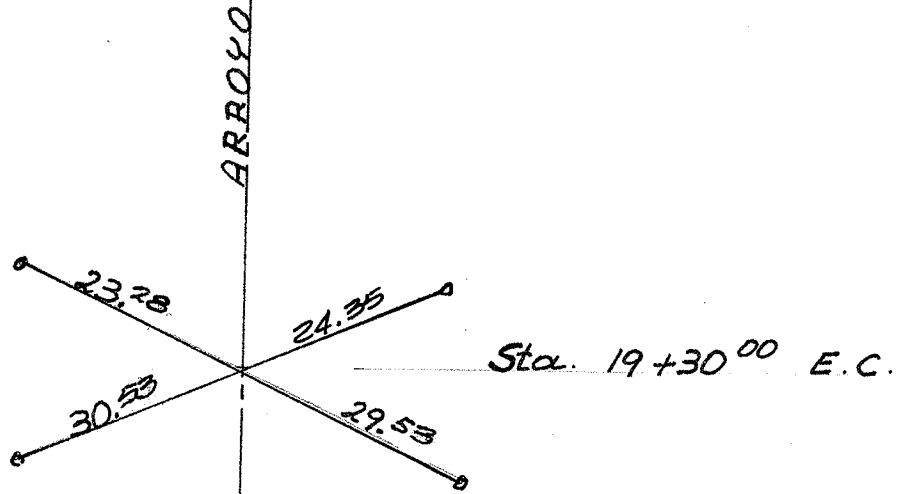
° = Lead Plug & Tack  
in Top of Curb

JOB NO		REFERENCE	
POINTS TO & CONTROL			
ORTEGA PROPERTIES			
ASSESSMENT DISTRICT			
FIELD WORK BY	NAME	DATE	
DRAWN BY			
CHECKED BY			

South Coast Engineering Service

EUGENE H. AYER  
REGISTERED CIVIL ENGINEER

420 N. El Camino Real  
~~2700 CAMINO CARRETERO~~ / (714) 492-3241  
 SAN CLEMENTE, CALIFORNIA 92672



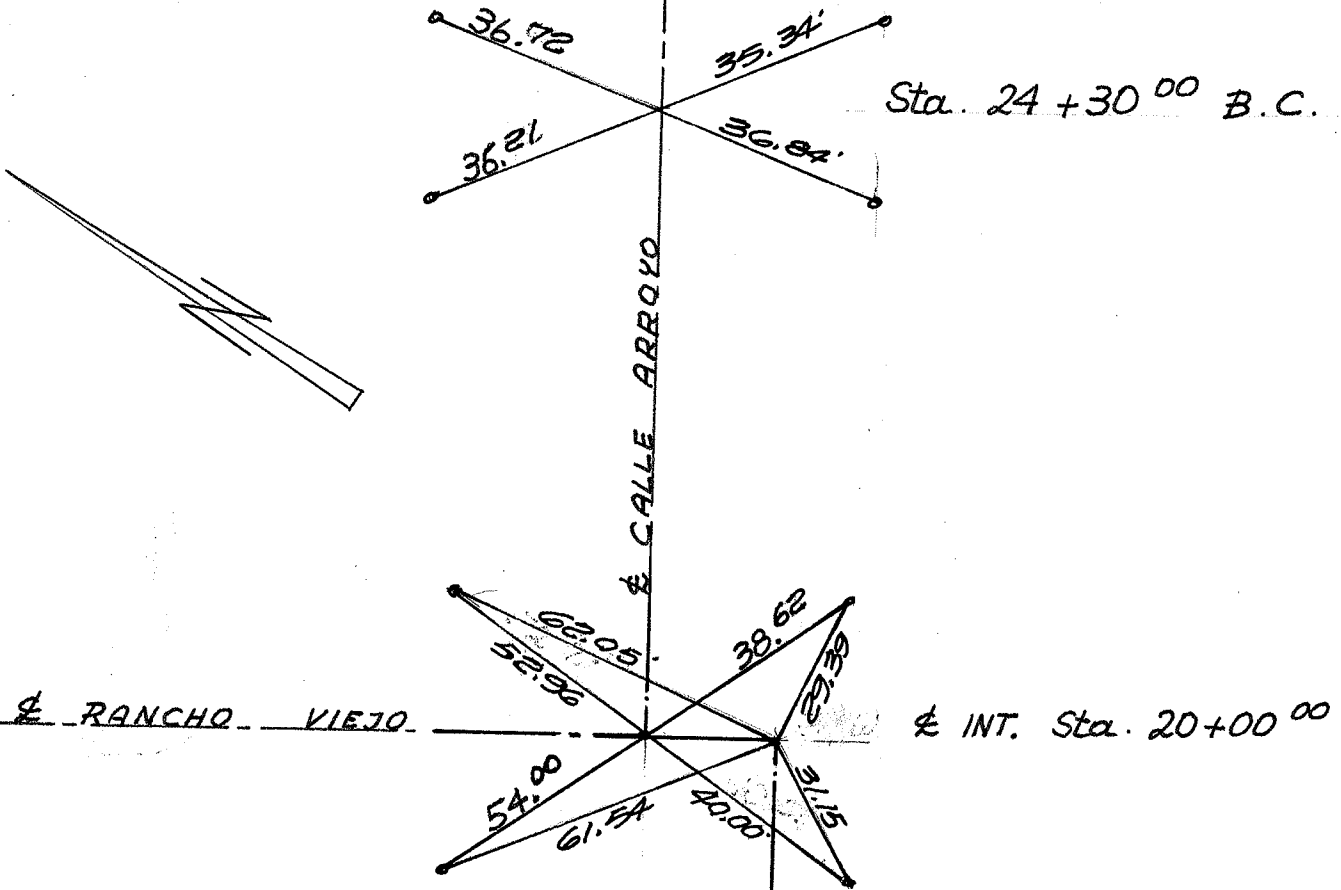
° = Lead Plug & Tack  
in Top of Curb

JOB NO	REFERENCE	
POINTS TO & CONTROL		
ORTEGA PROPERTIES		
ASSESSMENT DISTRICT		
FIELD WORK BY	NAME	DATE
DRAWN BY		
CHECKED BY		

**South Coast Engineering Service**

EUGENE H. AYER  
REGISTERED CIVIL ENGINEER

420 N. El Camino Real  
SAN CLEMENTE, CALIFORNIA 92672



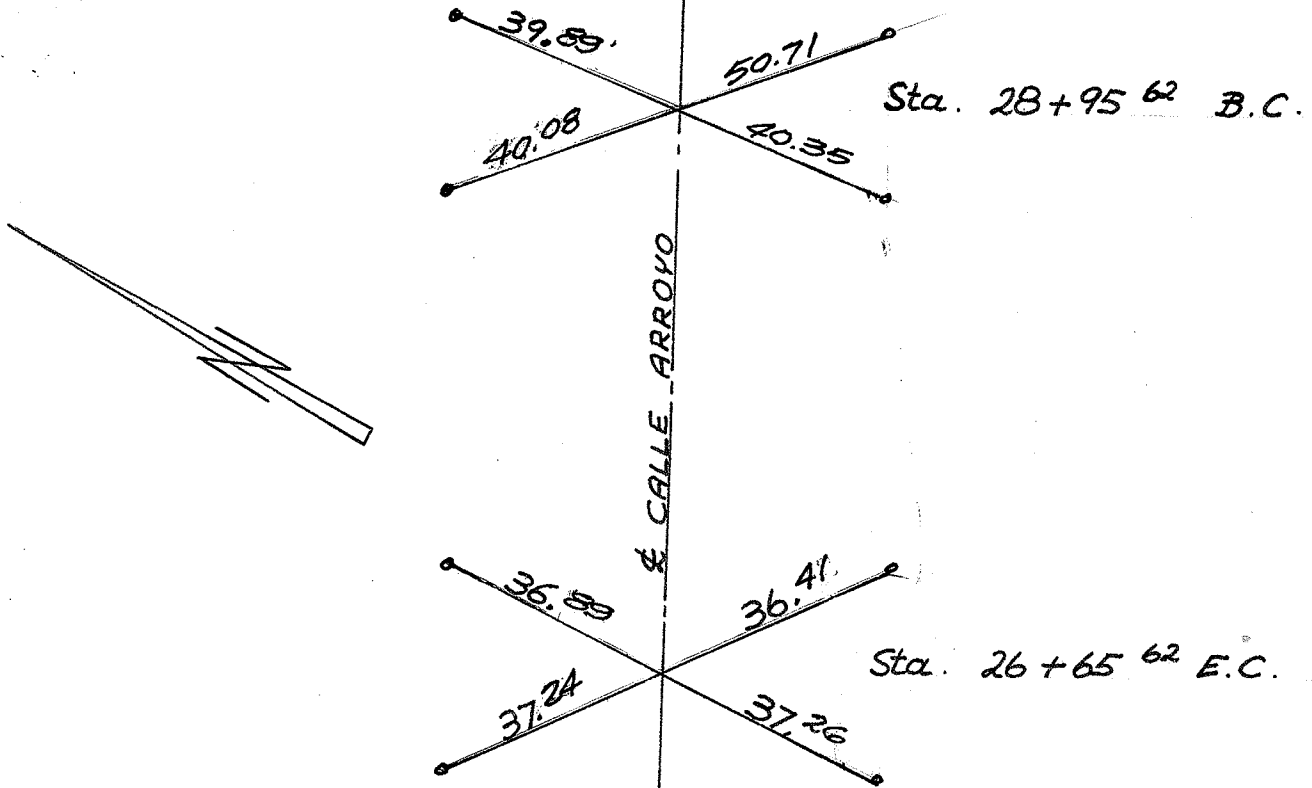
⊙ = Lead Plug & Tack  
 in Top of Curb

JOB NO	REFERENCE	
	POINTS TO CONTROL	
	ORTEGA PROPERTIES	
	ASSESSMENT DISTRICT	
FIELD WORK BY	NAME	DATE
DRAWN BY		
CHECKED BY		

South Coast Engineering Service

EUGENE H. AYER  
 REGISTERED CIVIL ENGINEER

420 N. El Camino Real  
 SAN CLEMENTE, CALIFORNIA 92672  
 (714) 492-3241



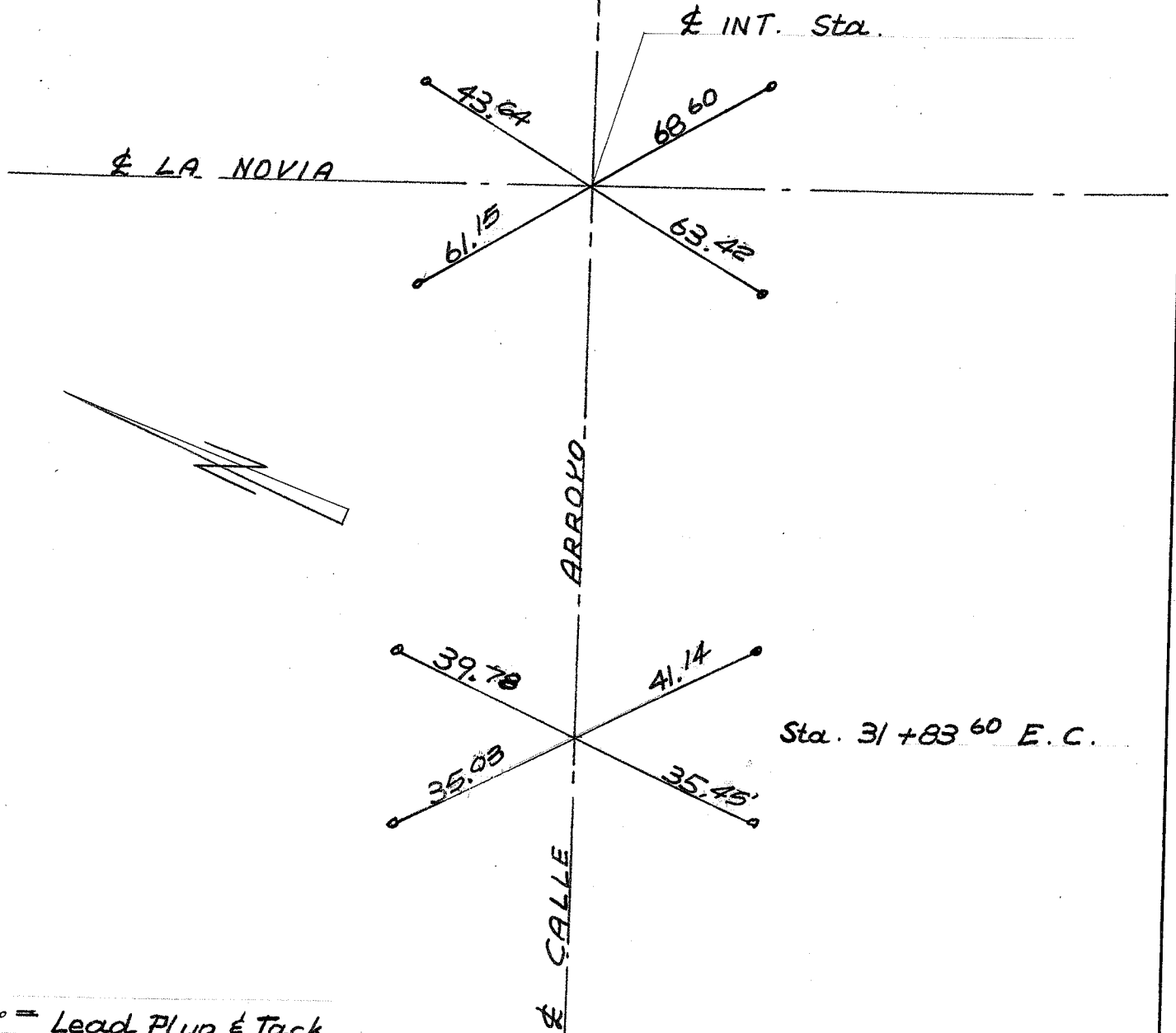
° = Lead Plug & Tack  
in Top of Curb

JOB NO	REFERENCE	
POINTS TO & CONTROL		
ORTEGA PROPERTIES		
ASSESSMENT DISTRICT		
FIELD WORK BY	NAME	DATE
DRAWN BY		
CHECKED BY		

South Coast Engineering Service

EUGENE H. AYER  
REGISTERED CIVIL ENGINEER

420 N. El Camino Real  
SAN CLEMENTE, CALIFORNIA 92672  
TEL: (714) 492-3241



° = Lead Plug & Tack  
in Top of Curb

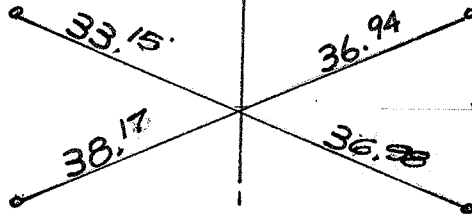
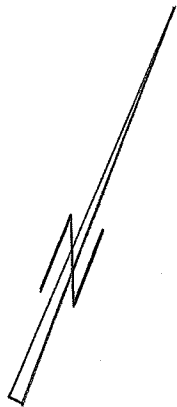
JOB NO		REFERENCE	
POINTS TO & CONTROL			
ORTEGA PROPERTIES			
ASSESSMENT DISTRICT			
FIELD WORK BY	NAME	DATE	
DRAWN BY			
CHECKED BY			

South Coast Engineering Service

EUGENE H. AYER  
REGISTERED CIVIL ENGINEER

420 N. El Camino Real  
~~425 CAMINO REAL~~ (714) 492-3241  
 SAN CLEMENTE, CALIFORNIA 92672





Sta. 3+81.19 B.C.

LA NOBIA

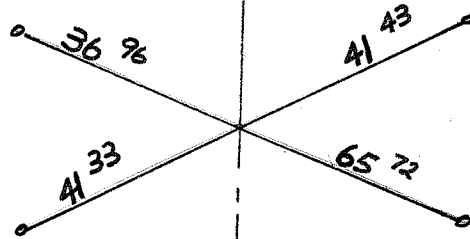
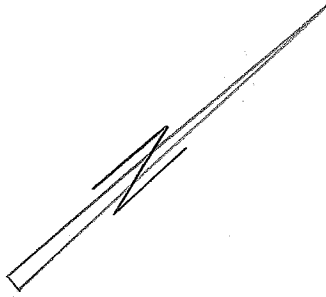
° = Lead Plug & Tack  
in Top of Curb

JOB NO	REFERENCE	
	POINTS TO $\epsilon$ -CONTROL	
	ORTEGA PROPERTIES	
	ASSESSMENT DISTRICT	
FIELD WORK BY	NAME	DATE
DRAWN BY		
CHECKED BY		

South Coast Engineering Service

EUGENE H. AYER  
REGISTERED CIVIL ENGINEER

420 N. El Camino Real  
2720 CAMINO CARRETERO / (714) 492-3241  
SAN CLEMENTE, CALIFORNIA 92672



Sta. 6+29<sup>22</sup> E.C.

LA NOYIA

LEAD PLUGS ARE COMMON  
REFERENCE POINTS FOR  
Sta. 6+29<sup>22</sup> E.C. &  
Sta. 6+46<sup>85</sup> & INT.

° = Lead Plug & Tack  
in Top of Curb

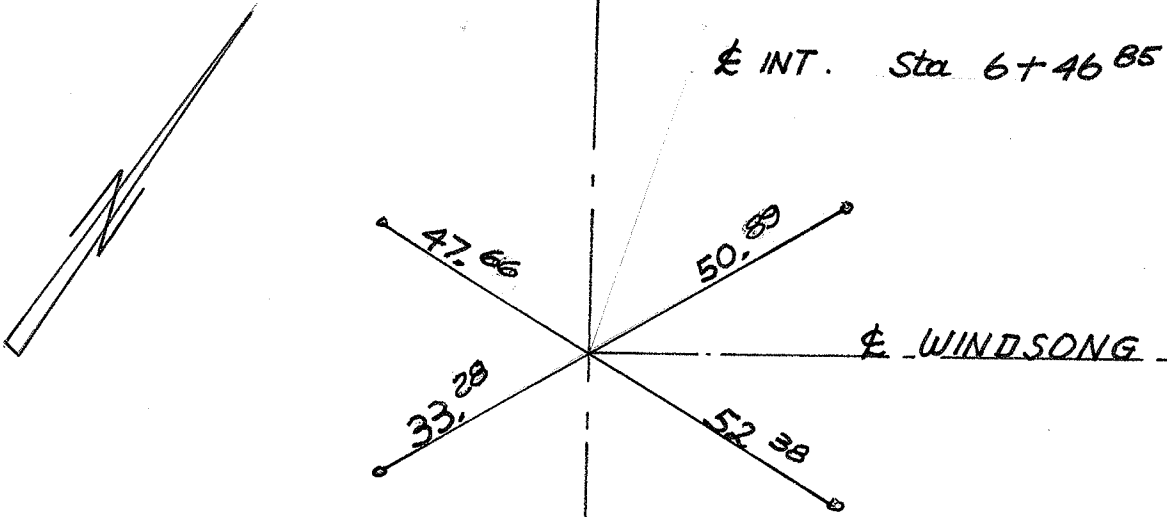
JOB NO		REFERENCE	
POINTS TO & CONTROL		ORTEGA PROPERTIES	
ASSESSMENT DISTRICT			
FIELD WORK BY	NAME	DATE	
DRAWN BY			
CHECKED BY			

South Coast Engineering Service

EUGENE H. AYER  
REGISTERED CIVIL ENGINEER

420 N. El Camino Real

~~2718 S. GARDNER STREET~~ / (714) 492-3241  
SAN CLEMENTE, CALIFORNIA 92672



E LA NOVIA

E WINDSONG

E INT. Sta 6+46.85

47.66

50.89

52.38

33.28

° = Lead Plug & Tack  
in Top of Curb

LEAD PLUGS ARE COMMON  
REFERENCE POINTS FOR  
Sta. 6+29<sup>22</sup> E.C. &  
Sta. 6+46<sup>85</sup> E INT.

JOB NO REFERENCE

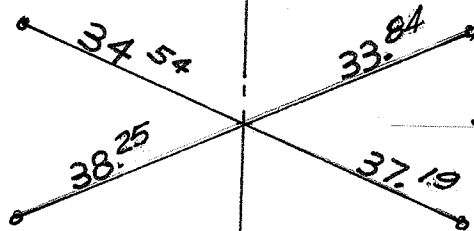
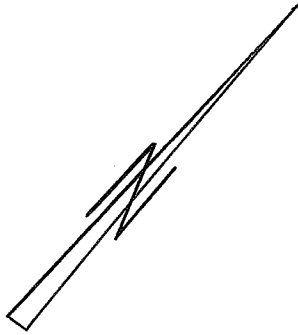
POINTS TO & CONTROL  
ORTEGA PROPERTIES  
ASSESSMENT DISTRICT

FIELD WORK BY	NAME	DATE
DRAWN BY		
CHECKED BY		

South Coast Engineering Service

EUGENE H. AYER  
REGISTERED CIVIL ENGINEER

420 N. El Camino Real  
SAN CLEMENTE, CALIFORNIA 92672



LA NOBIA

° = Lead Plug & Tack  
in Top of Curb

JOB NO	REFERENCE	
POINTS TO & CONTROL		
ORTEGA PROPERTIES		
ASSESSMENT DISTRICT		
FIELD WORK BY	NAME	DATE
DRAWN BY		
CHECKED BY		

South Coast Engineering Service

EUGENE H. AYER  
REGISTERED CIVIL ENGINEER

420 N. El Camino Real

~~2720 El Camino Real, Suite 100~~ / (714) 492-3241  
SAN CLEMENTE, CALIFORNIA 92672