



**R. M. Galloway
& Associates Inc.**

CIVIL ENGINEERS & PLANNERS
LAND AND MINERAL SURVEYORS/LANDSCAPE ARCHITECTS

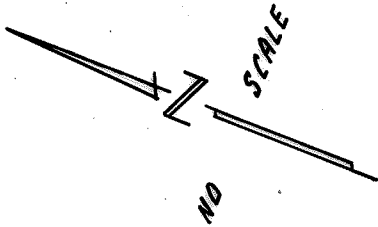
NEWPORT BEACH/COSTA MESA • SAN FRANCISCO • LOS ANGELES • SAN DIEGO • ALTURAS, CALIF. • PRESCOTT, ARIZONA

GALBAR BUILDING
129 CABRILLO, COSTA MESA, CALIF. (714) 642-9840

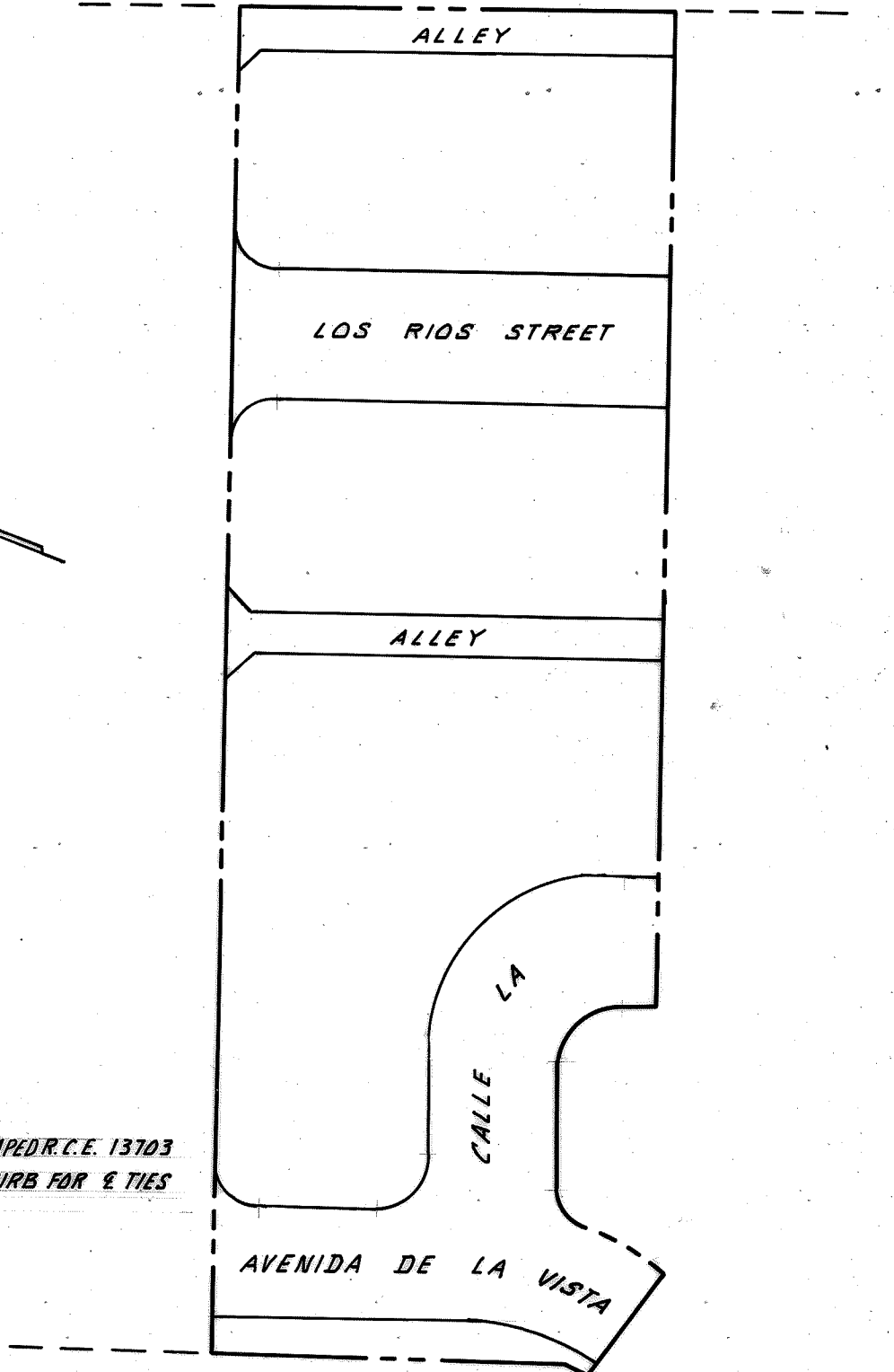
MAILING ADDRESS
P.O. BOX 1995
NEWPORT BEACH, CALIF. 92663

€ TIE NOTES - TRACT 7160

*TRACT NO. 7195
M.M. 331/5-14*



€ A.T.E.S.F. R/W



LEGEND

- = SET SPIKE & WASHER, STAMPED R.C.E. 13703
- = SET LEAD & TACK IN TOP OF CURB FOR € TIES UNLESS OTHERWISE NOTED.



**R. M. Galloway
& Associates Inc.**

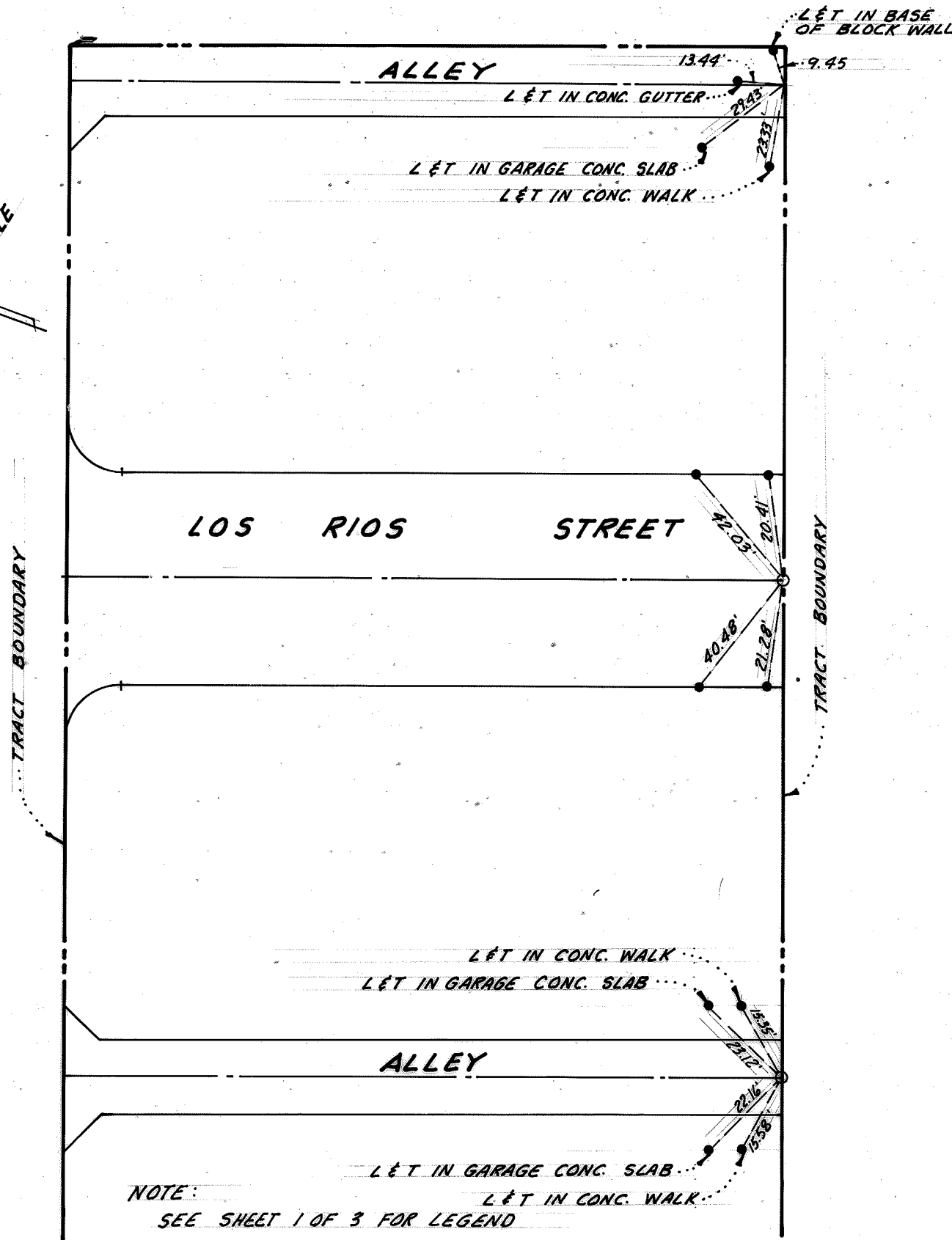
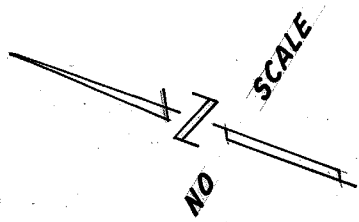
CIVIL ENGINEERS & PLANNERS
LAND AND MINERAL SURVEYORS/LANDSCAPE ARCHITECTS

NEWPORT BEACH/COSTA MESA • SAN FRANCISCO • LOS ANGELES • SAN DIEGO • ALTURAS, CALIF. • PRESCOTT, ARIZONA

GALBAR BUILDING
129 CABRILLO, COSTA MESA, CALIF.
(714) 642-9840

MAILING ADDRESS
P.O. BOX 1995
NEWPORT BEACH, CALIF. 92663

TIE NOTES - TRACT 7160



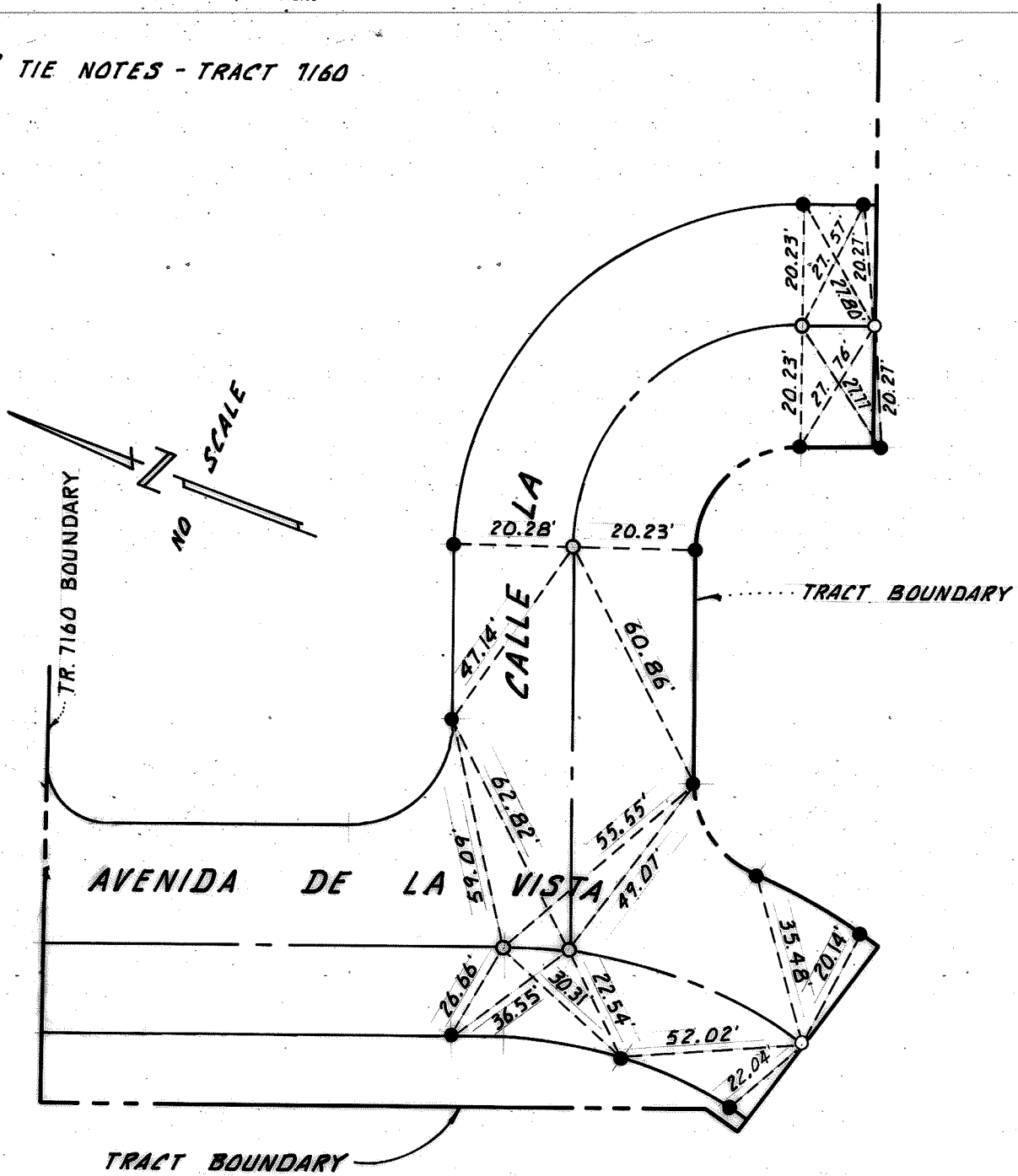


**R. M. Galloway
& Associates Inc.**

CIVIL ENGINEERS & PLANNERS
LAND AND MINERAL SURVEYORS/LANDSCAPE ARCHITECTS

NEWPORT BEACH/COSTA MESA • SAN FRANCISCO • LOS ANGELES • SAN DIEGO • ALTURAS, CALIF. • PRESCOTT, ARIZONA
GALBAR BUILDING
129 CABRILLO, COSTA MESA, CALIF. MAILING ADDRESS P.O. BOX 1995
(714) 642-9840 NEWPORT BEACH, CALIF. 92663

E TIE NOTES - TRACT 7160



NOTE:
SEE SHEET 1 OF 3 FOR LEGEND.