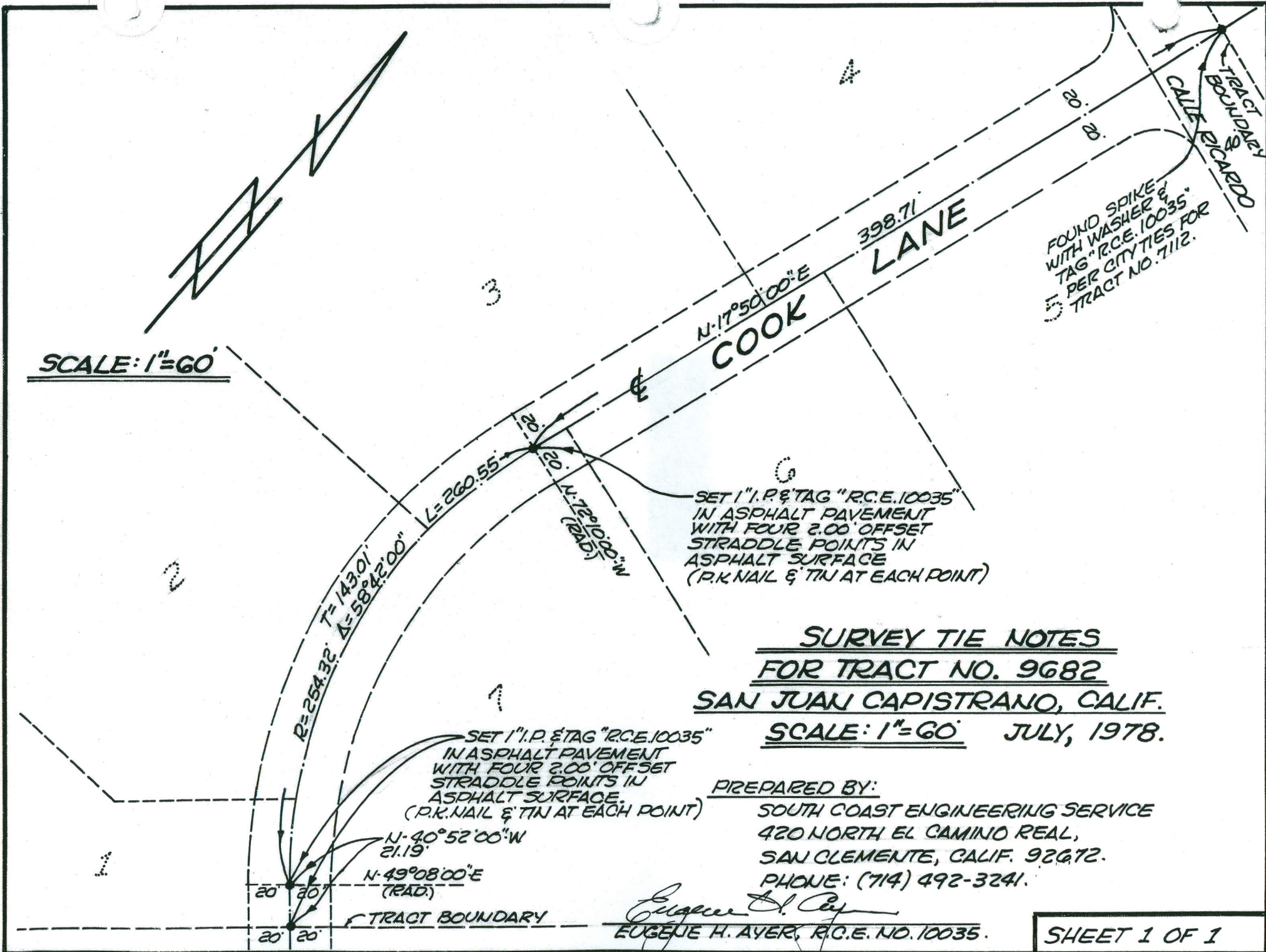
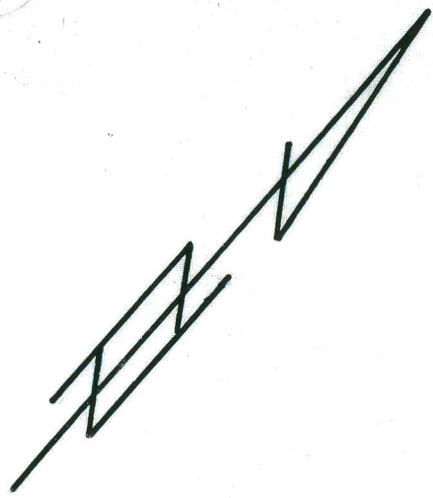


SCALE: 1"=60'



FOUND SPIKE WITH WASHER & TAG "R.C.E. 10035" PER CITY TIES FOR TRACT NO. 7112.

SET 1" I.P. & TAG "R.C.E. 10035" IN ASPHALT PAVEMENT WITH FOUR 2.00' OFFSET STRADDLE POINTS IN ASPHALT SURFACE (P.K. NAIL & TIN AT EACH POINT)

SET 1" I.P. & TAG "R.C.E. 10035" IN ASPHALT PAVEMENT WITH FOUR 2.00' OFFSET STRADDLE POINTS IN ASPHALT SURFACE. (P.K. NAIL & TIN AT EACH POINT)

SURVEY TIE NOTES
FOR TRACT NO. 9682
SAN JUAN CAPISTRANO, CALIF.
SCALE: 1"=60' JULY, 1978.

PREPARED BY:
SOUTH COAST ENGINEERING SERVICE
420 NORTH EL CAMINO REAL,
SAN CLEMENTE, CALIF. 92672.
PHONE: (714) 492-3241.

Eugene H. Aver
EUGENE H. AVER, R.C.E. NO. 10035.