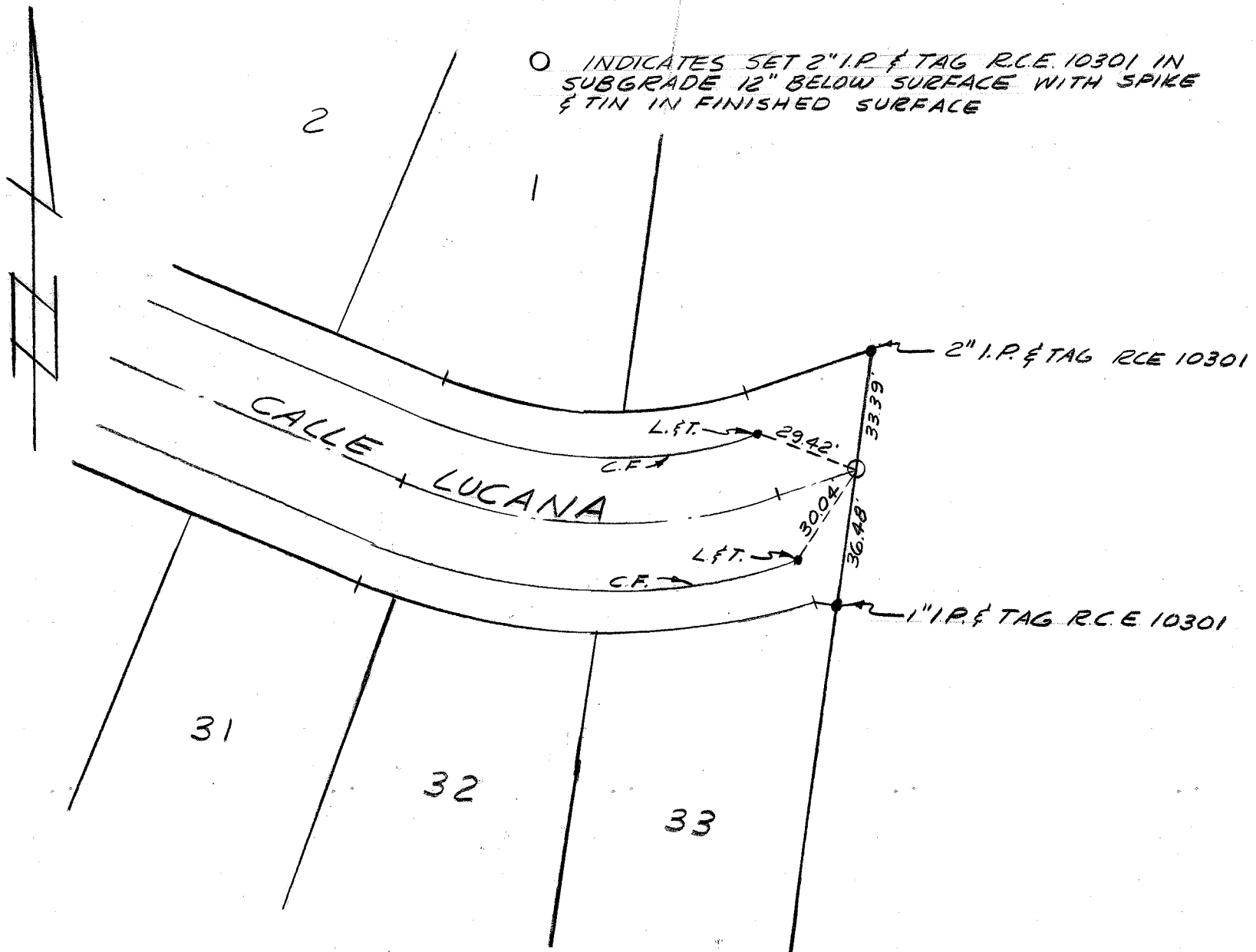


TRACT NO. 5675 TIE NOTES

SCALE: 1" = 40'

MAY, 1965

○ INDICATES SET 2" I.P. & TAG R.C.E. 10301 IN SUBGRADE 12" BELOW SURFACE WITH SPIKE & TIN IN FINISHED SURFACE



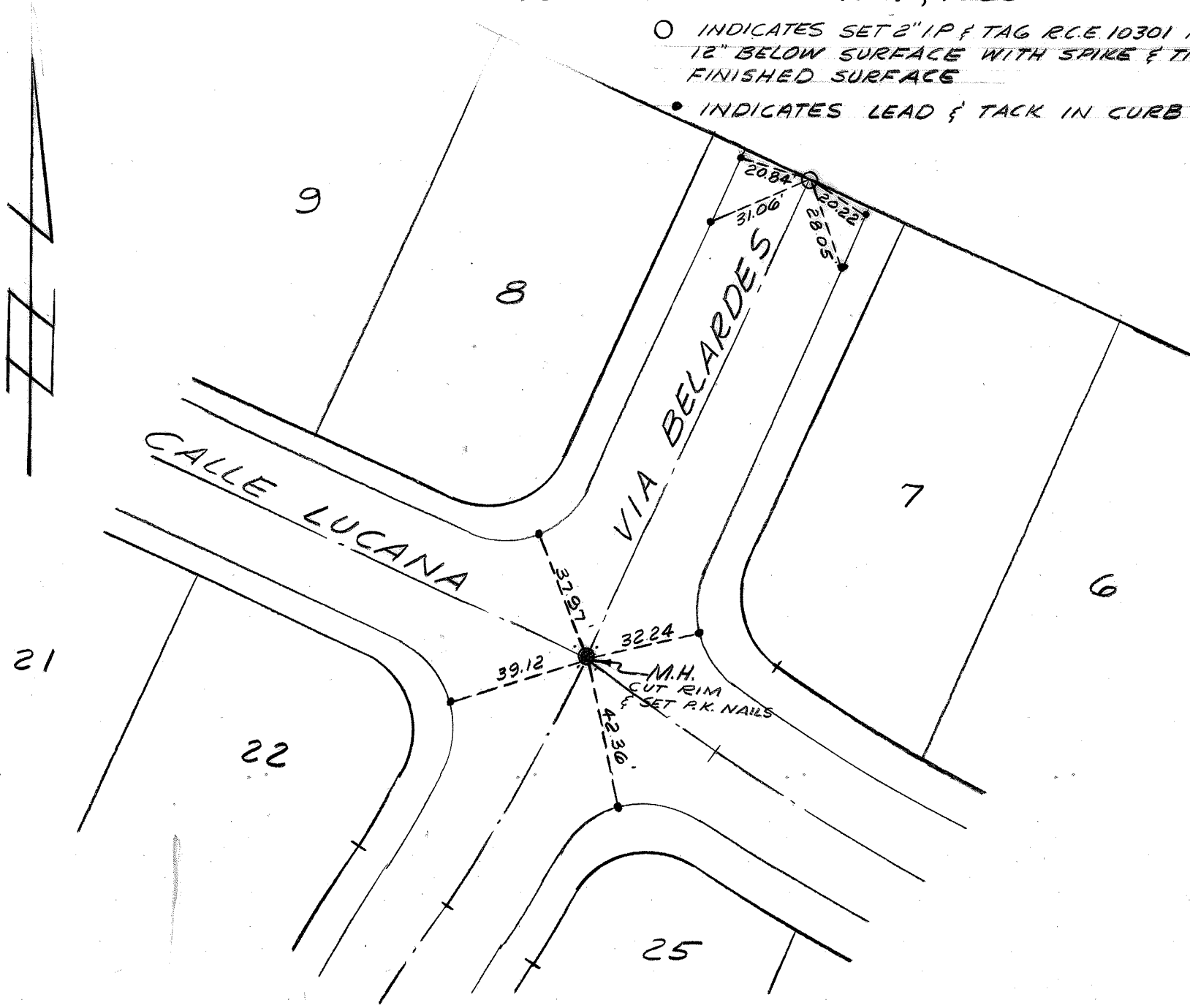
# TRACT NO. 5675 TIE NOTES

SCALE: 1"=40'

MAY, 1965

○ INDICATES SET 2" IP & TAG R.C.E. 10301 IN SUBGRADE  
12" BELOW SURFACE WITH SPIRE & TIN IN  
FINISHED SURFACE

• INDICATES LEAD & TACK IN CURB



# TRACT NO. 5675 TIE NOTES

SCALE: 1" = 40'

MAY, 1965

- INDICATES SET 2" I.P. & TAG R.C.E. 10301 IN SUBGRADE 12" BELOW SURFACE WITH SPIKE & TIN IN FINISHED SURFACE
- INDICATES LEAD & TACK IN CURB

