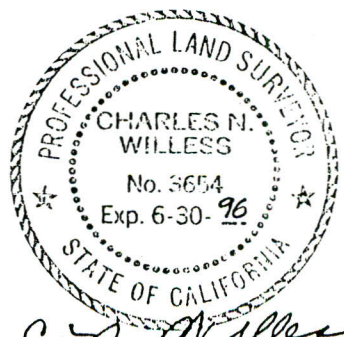
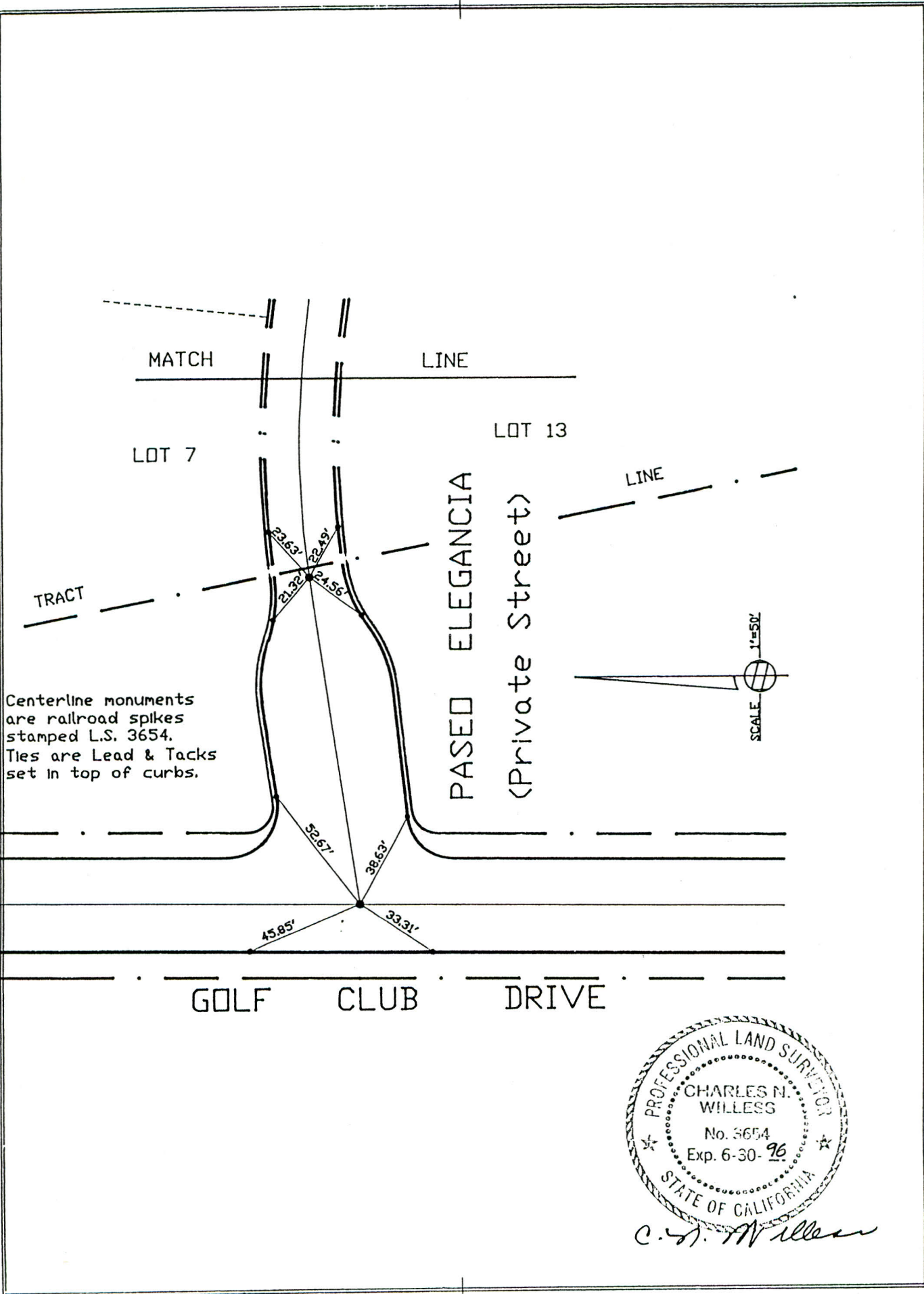


GOLD COAST SURVEYING, INC.

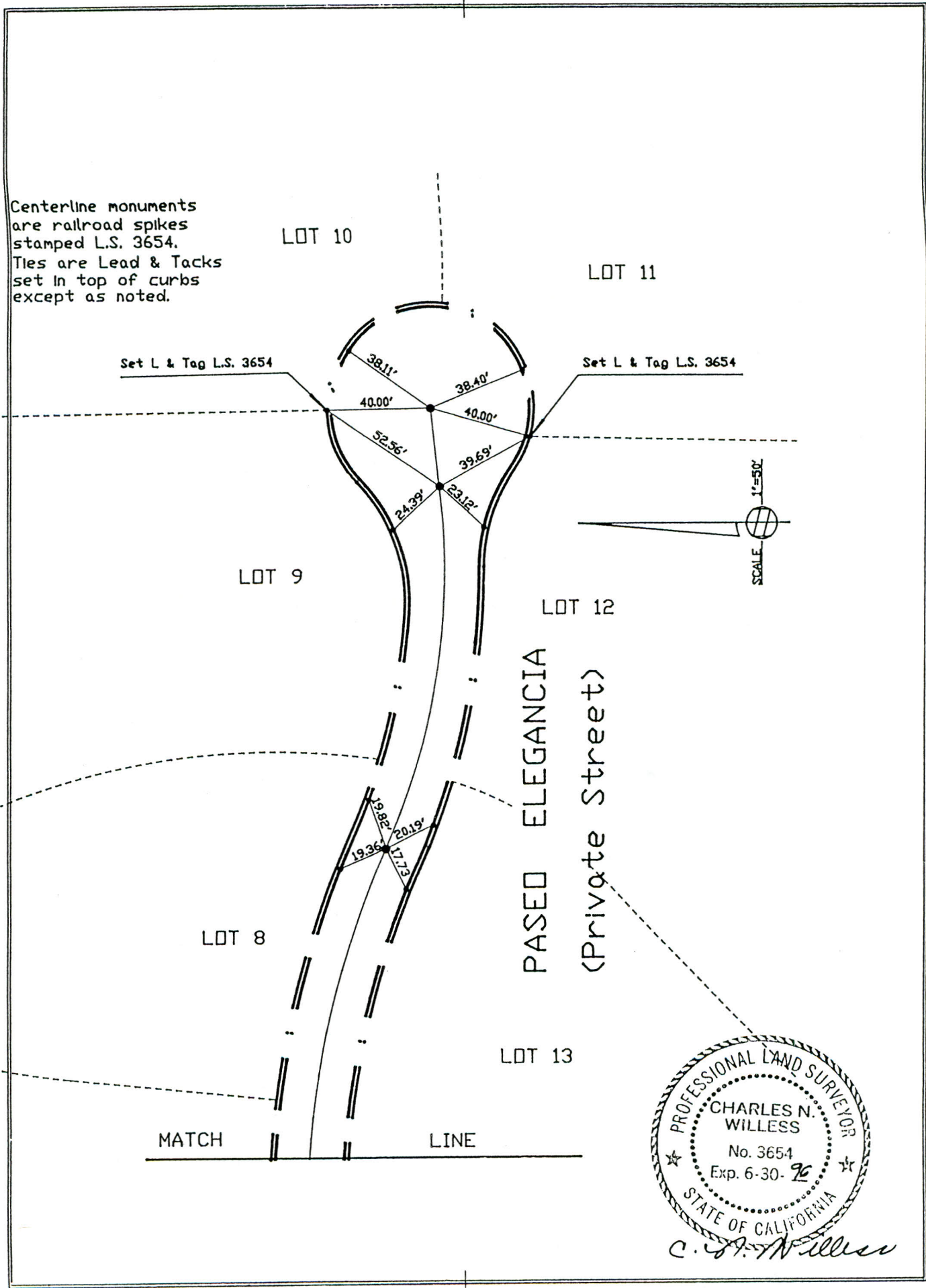
SURVEY BY C.M. & B.P. DATE 10-28-94
DRAWN C.M. CHECKED BY C.M. DATE 10-29-94



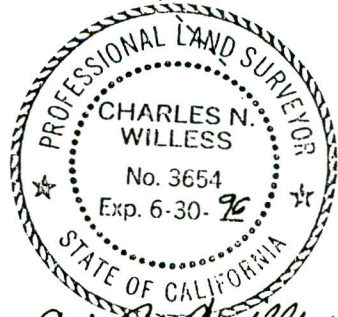
C.N. Willess

GOLD COAST SURVEYING, INC.

Centerline monuments
are railroad spikes
stamped L.S. 3654.
Ties are Lead & Tacks
set in top of curbs
except as noted.



SURVEY BY C.W. & B.P. DATE 10-28-92
 DRAWN BY C.W. CHECKED BY C.W. DATE 10-29-92



C. N. Willess