

# RMG ENGINEERING, INC.

Civil Engineers, Planners & Land Surveyors

3990 WESTERLY PLACE • NEWPORT BEACH, CALIFORNIA 92660 • (714) 752-8171

1 OF 4

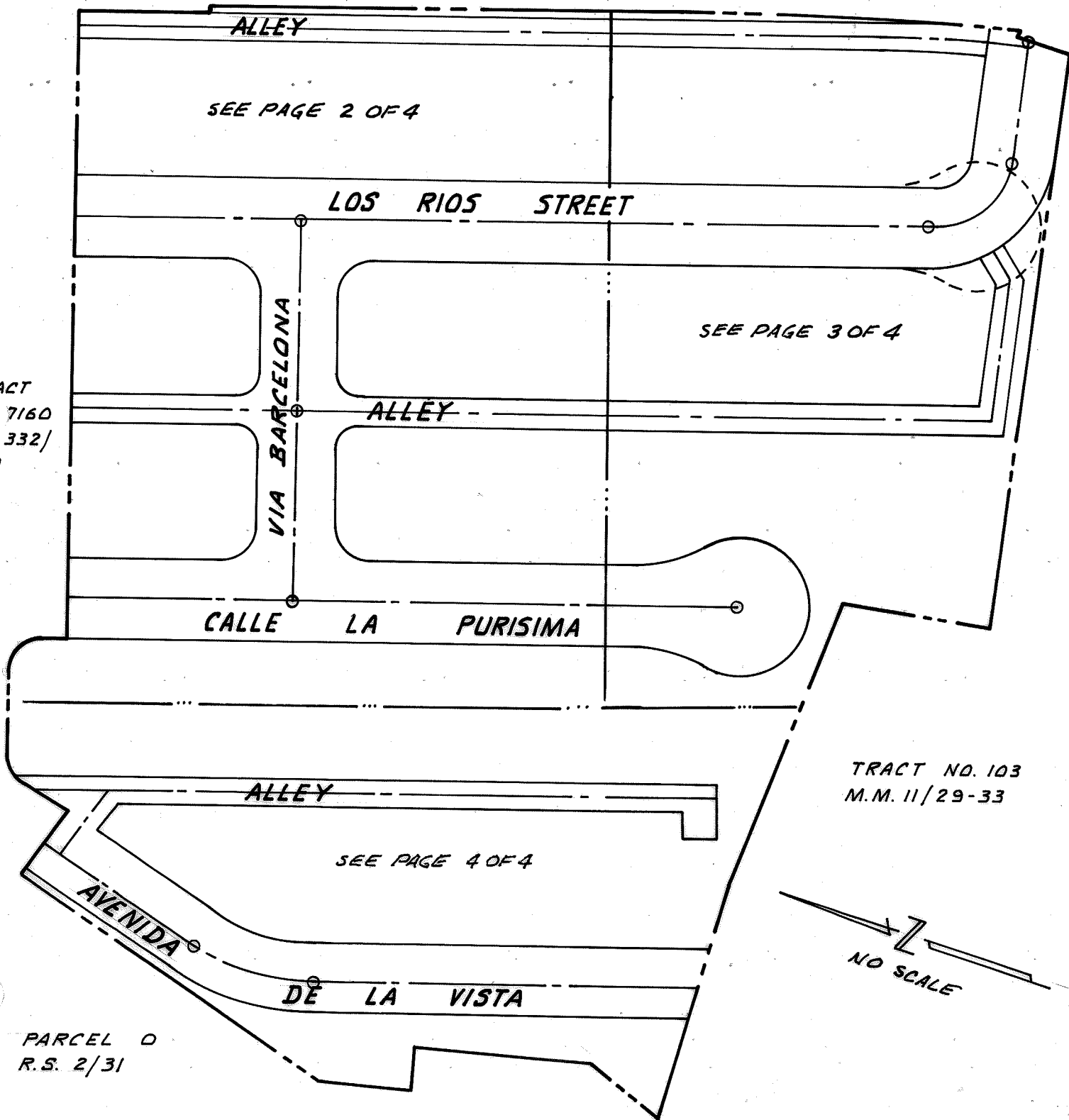
APRIL, 1978

J.N. 366-2403

## ⊕ TIE NOTES - TRACT 7196

⊕ A.T. ⊕ S.F. R.R. R/W

TRACT  
N 7160  
M.M. 332/  
1-9



SEE PAGE 3 OF 4

CALLE LA PURISIMA

ALLEY

SEE PAGE 4 OF 4

AVENIDA

DE LA VISTA

TRACT NO. 103  
M.M. 11/29-33

NO SCALE

PARCEL D  
R.S. 2/31

# RMG ENGINEERING, INC.

APRIL, 1978

J.N. 366-2403

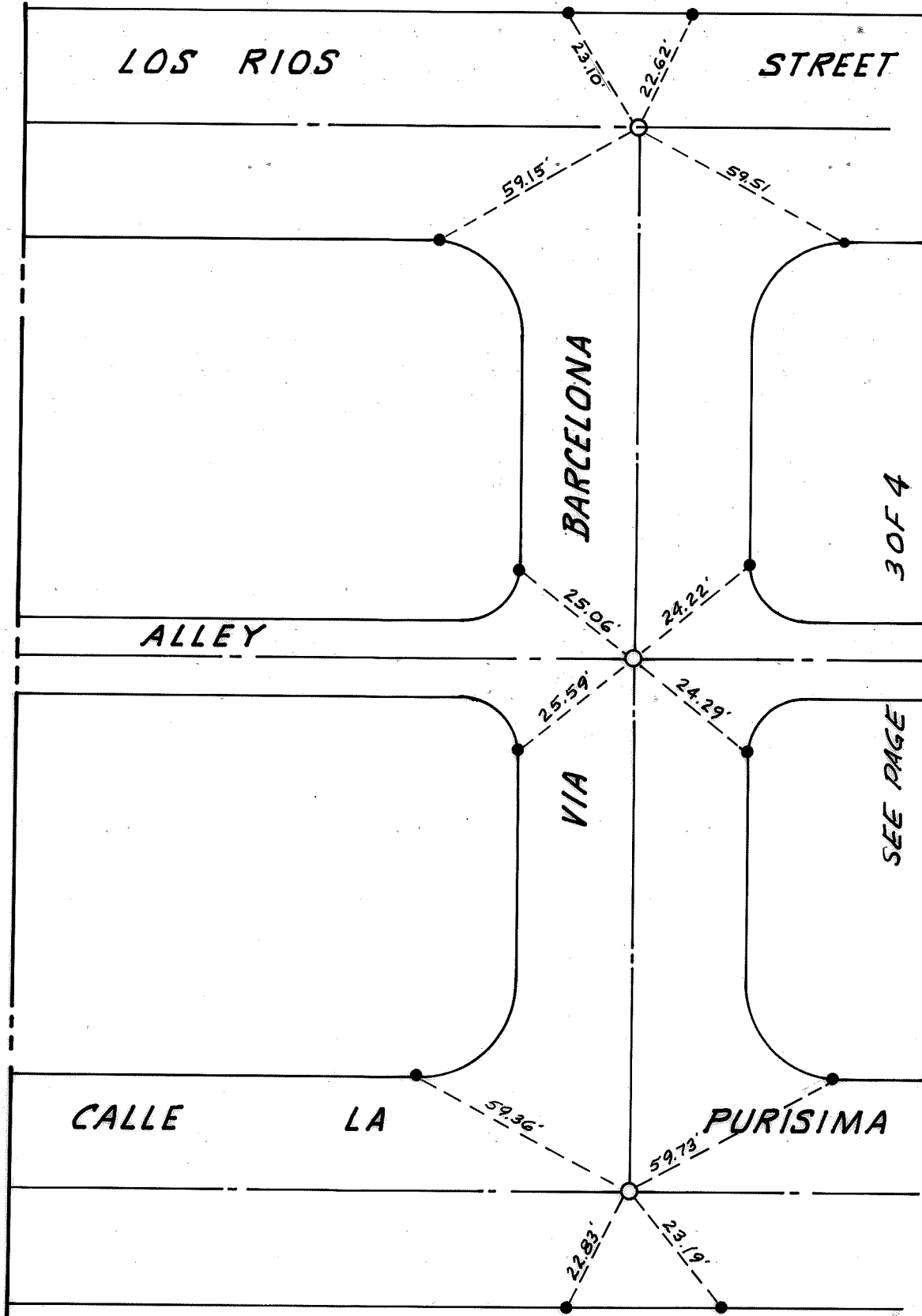
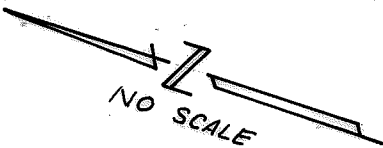
Civil Engineers, Planners & Land Surveyors

3990 WESTERLY PLACE • NEWPORT BEACH, CALIFORNIA 92660 • (714) 752-8171

## TIE NOTES - TRACT 7196

○ INDICATES 2" I.P. T&D. RCE 13703 SET IN SUBGRADE WITH 6FT T&D RCE 13703 IN FINISHED SURFACE, UNLESS OTHERWISE NOTED

● INDICATES L&T SET IN TOP OF CURB, UNLESS OTHERWISE NOTED.



SEE PAGE 4 OF 4

# RMG ENGINEERING, INC.

Civil Engineers, Planners & Land Surveyors

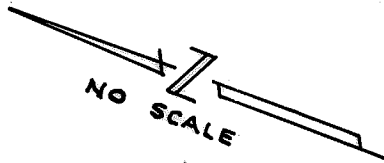
3990 WESTERLY PLACE • NEWPORT BEACH, CALIFORNIA 92660 • (714) 752-8171

3 OF 4  
 APRIL, 1978  
 J.N. 366-2403

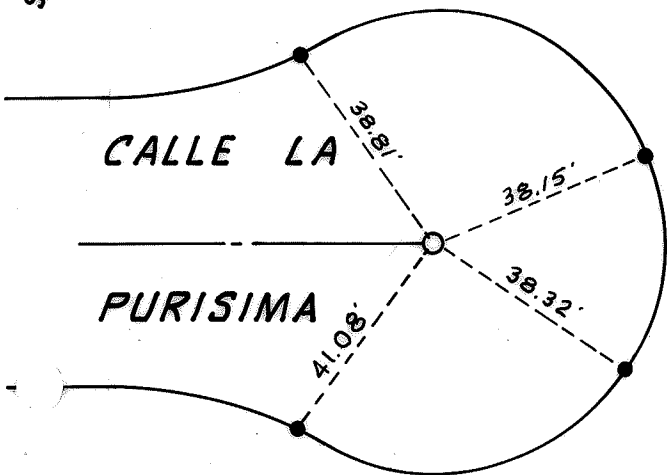
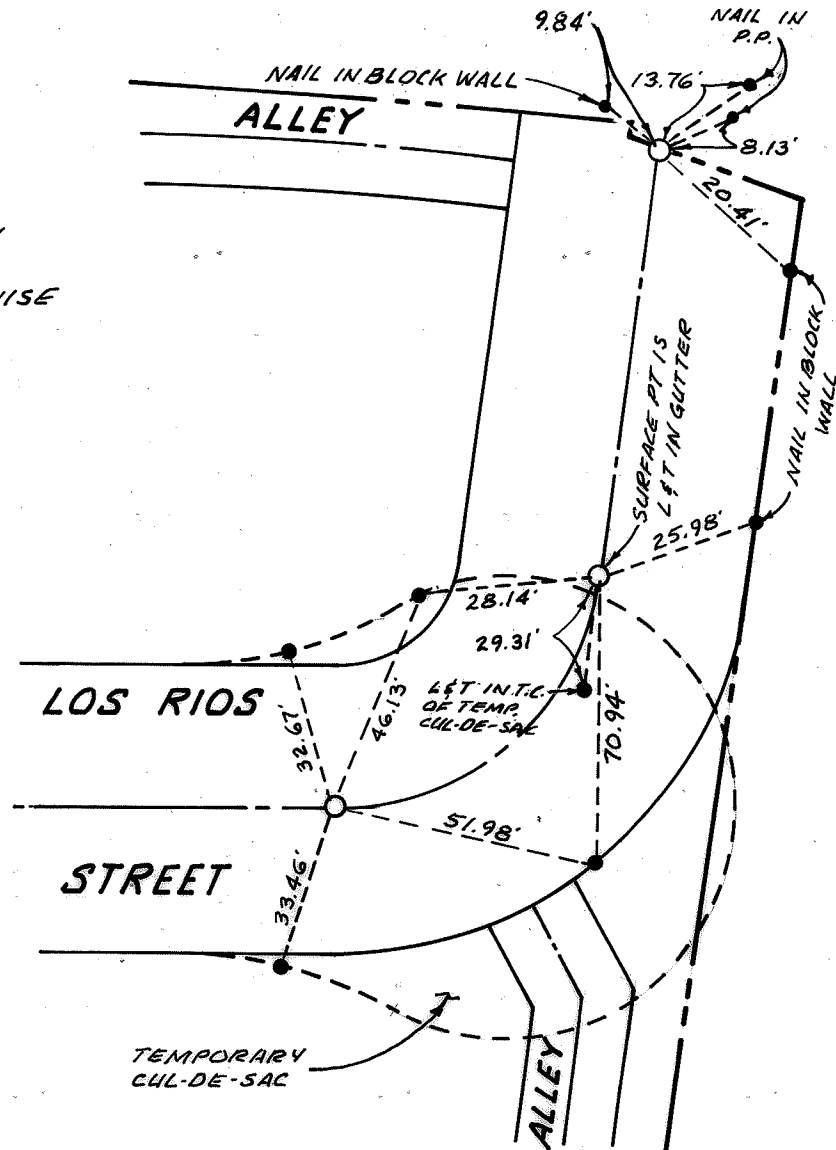
## Ⓔ TIE NOTES - TRACT 7196

○ INDICATES 2" I.P. T&D. R.C.E. 13703 SET IN SUBGRADE WITH 5' T T&D. R.C.E. 13703 IN FINISHED SURFACE, UNLESS OTHERWISE NOTED.

● INDICATES L&T SET IN TOP OF CURB, UNLESS OTHERWISE NOTED.



SEE PAGE 2 OF 4



# RMG ENGINEERING, INC.

Civil Engineers, Planners & Land Surveyors

3990 WESTERLY PLACE • NEWPORT BEACH, CALIFORNIA 92660 • (714) 752-8171

## TIE NOTES - TRACT 7196

○ INDICATES 2" I.P. T&D. RCE 13703 SET IN SUBGRADE WITH SET T&D RCE 13703 IN FINISHED SURFACE, UNLESS OTHERWISE NOTED.

● INDICATES L&T SET IN TOP OF CURB, UNLESS OTHERWISE NOTED.

