

# MONUMENT TIES

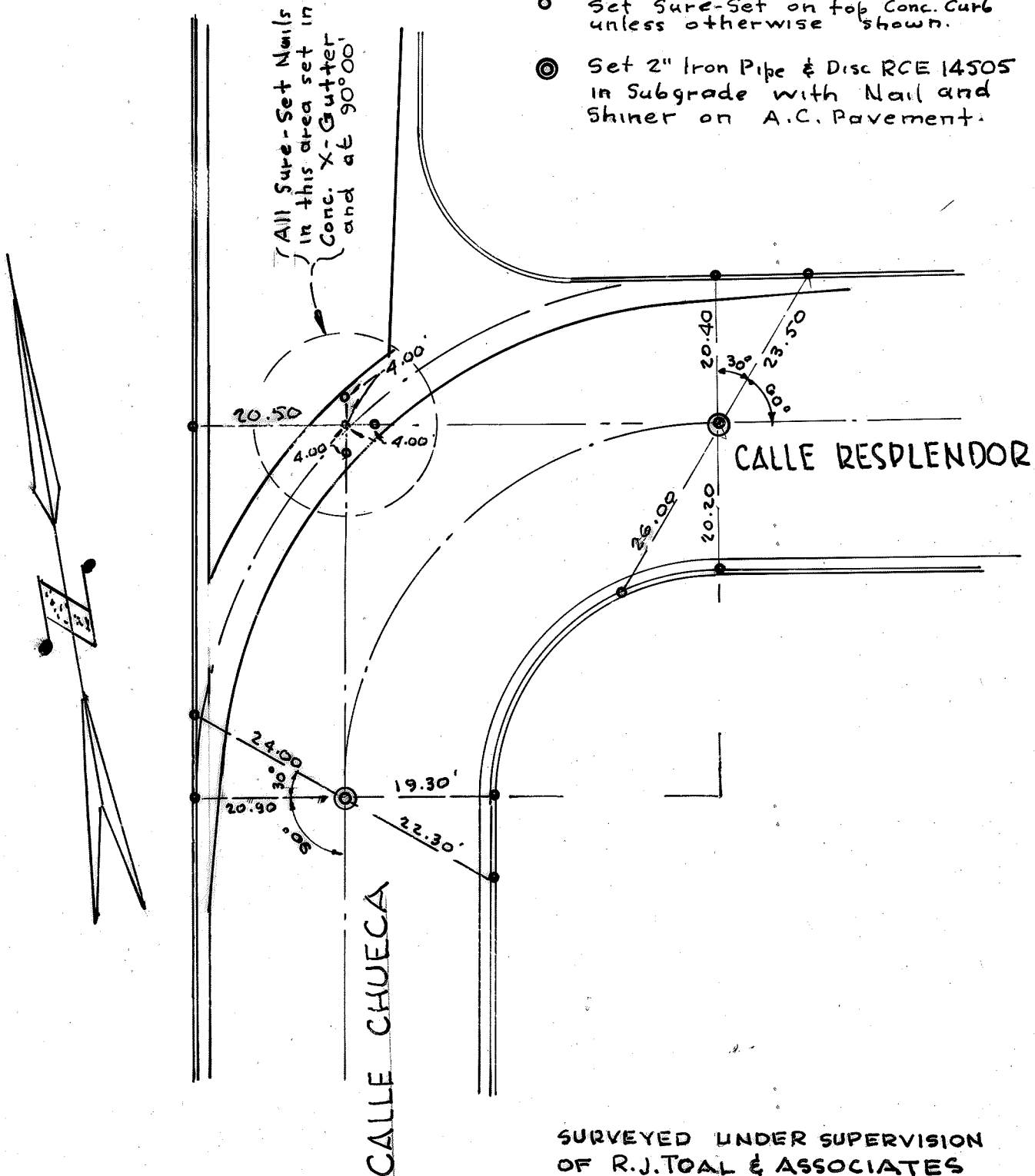
CASITAS CAPISTRANO

TRACT 5946

SAN JUAN CAPISTRANO, CALIF.

## — LEGEND —

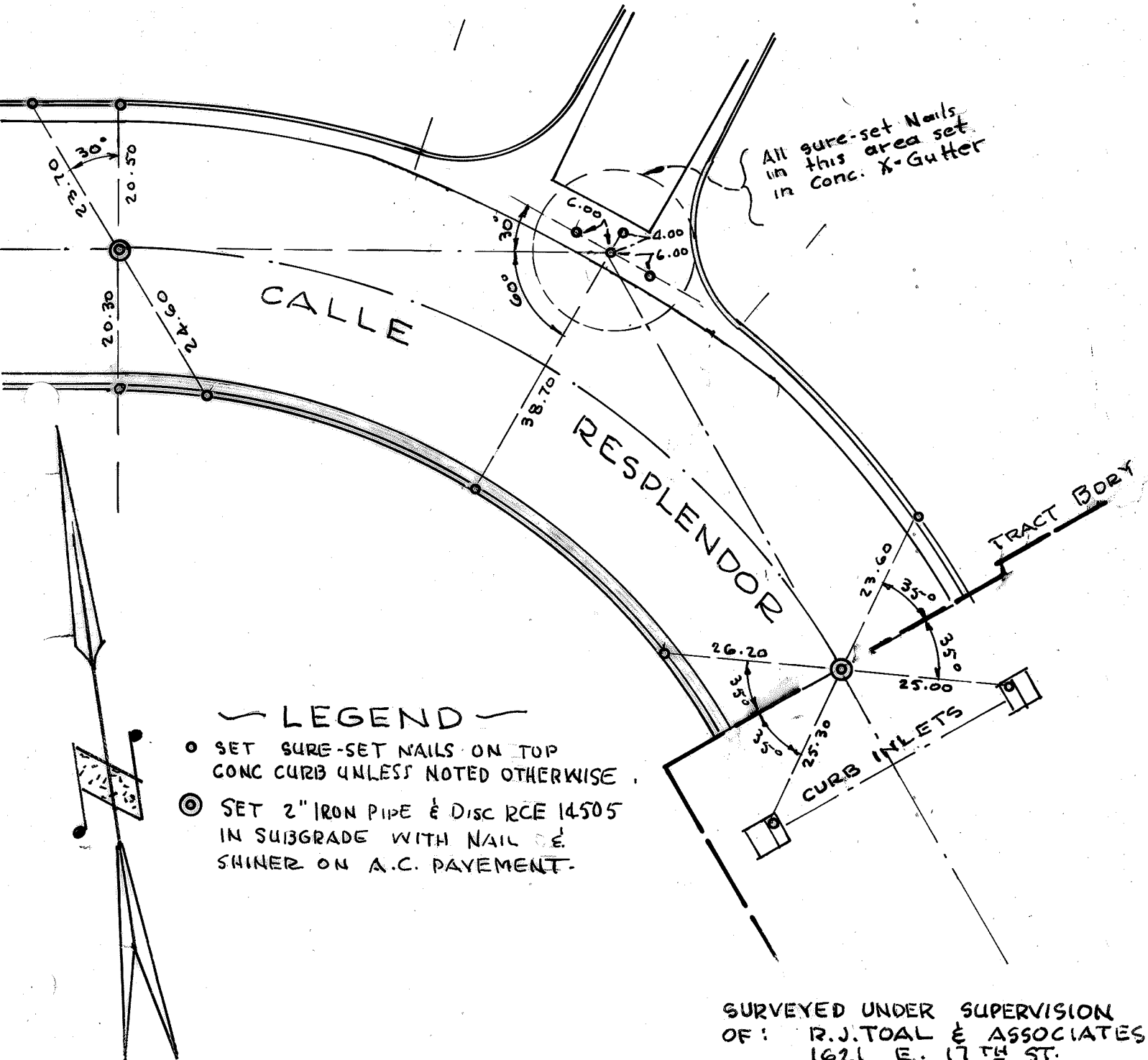
- Set Sure-Set on top Conc. Curb unless otherwise shown.
- ⊙ Set 2" Iron Pipe & Disc RCE 14505 in Subgrade with Nail and Shiner on A.C. Pavement.



SURVEYED UNDER SUPERVISION  
OF R.J. TOAL & ASSOCIATES  
1621 E. 17<sup>TH</sup> ST.  
SANTA ANA, CALIF.

# MONUMENT TIES

CASITAS CAPISTRANO TRACT 5946  
 SAN JUAN CAPISTRANO, CALIF.



SURVEYED UNDER SUPERVISION  
 OF: R.J. TOAL & ASSOCIATES  
 1621 E. 17<sup>TH</sup> ST.  
 SANTA ANA, CALIF.